

# PASSENGER & LIGHT TRUCK TIRES

CATALOGUE

**ROADX**  
TIRE



REV 23.01

Roadx Headquarters  
No. 43 Zhengzhou Road, Qingdao, China

## PASSENGER

<b>SUMMER</b>	H11 .....	06	
	H12 .....	08	
	MX440 .....	10	
	U01 .....	12	
	U11 .....	14	
	RUN FLAT		
	U11 / SU01 / H12 .....	18	
	SPARTAN II .....	20	
	RT01 .....	22	
	<b>ALL SEASON</b>	4S .....	24
<b>WINTER</b>	WU01 .....	46	
	ARCTIC .....	50	
	WH01 .....	52	
	WH03 .....	54	
	FX11 .....	58	
	WH12 .....	60	

## SUV / 4X4

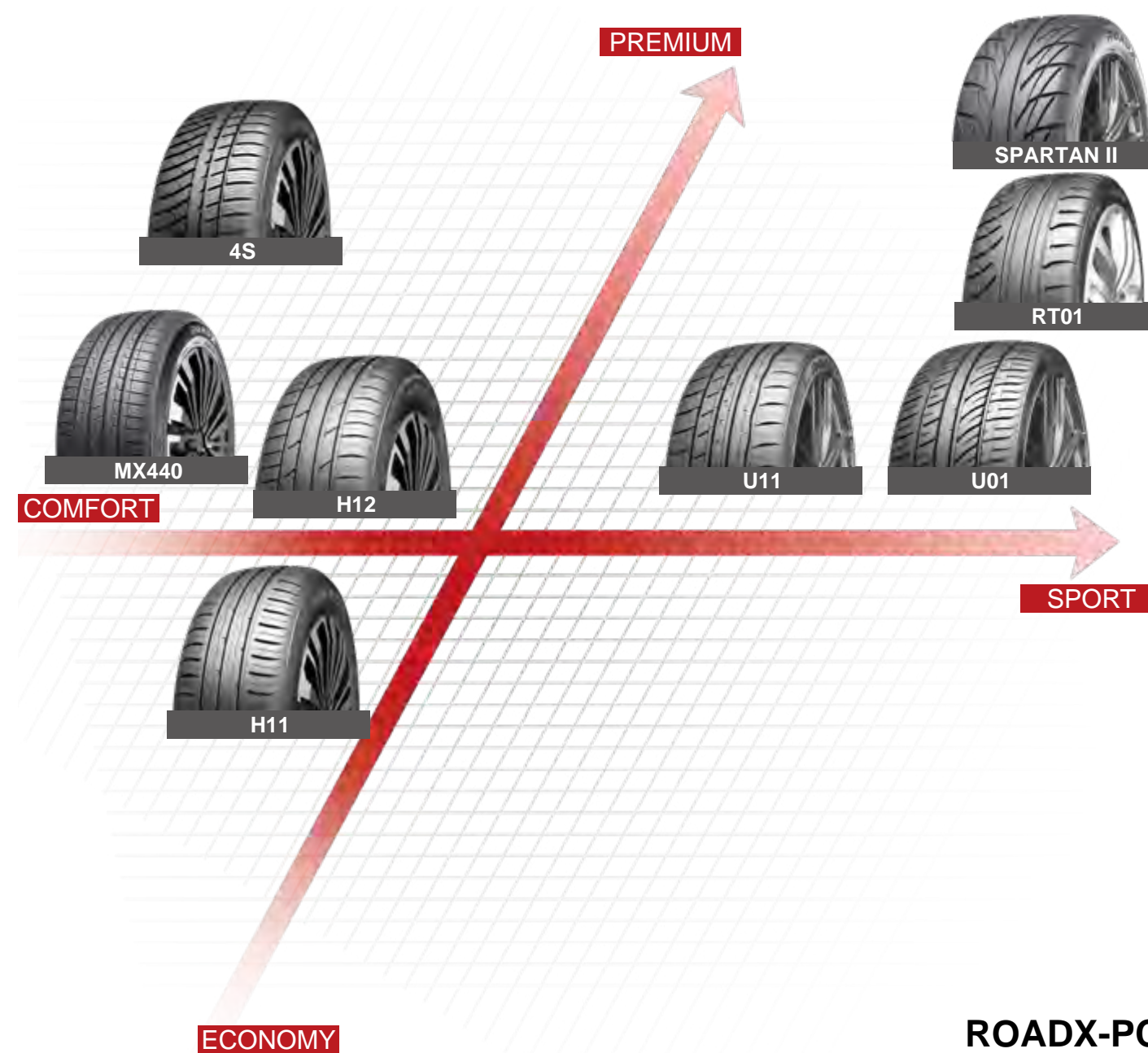
<b>ON ROAD</b>	SU01 .....	26
	H/T01 .....	28
	H/T02 .....	30
<b>OFF ROAD</b>	QX12 .....	32
	AT21 .....	34
	M/T .....	36
<b>WINTER</b>	WU02 .....	48

## VAN / COMMERCIAL

<b>SUMMER</b>	C01 .....	38
	C02 .....	40
	C31 .....	42
<b>ALL SEASON</b>	VAN 4S .....	44
<b>WINTER</b>	WC01 .....	56
	WCS01 .....	62

## RXMOTION

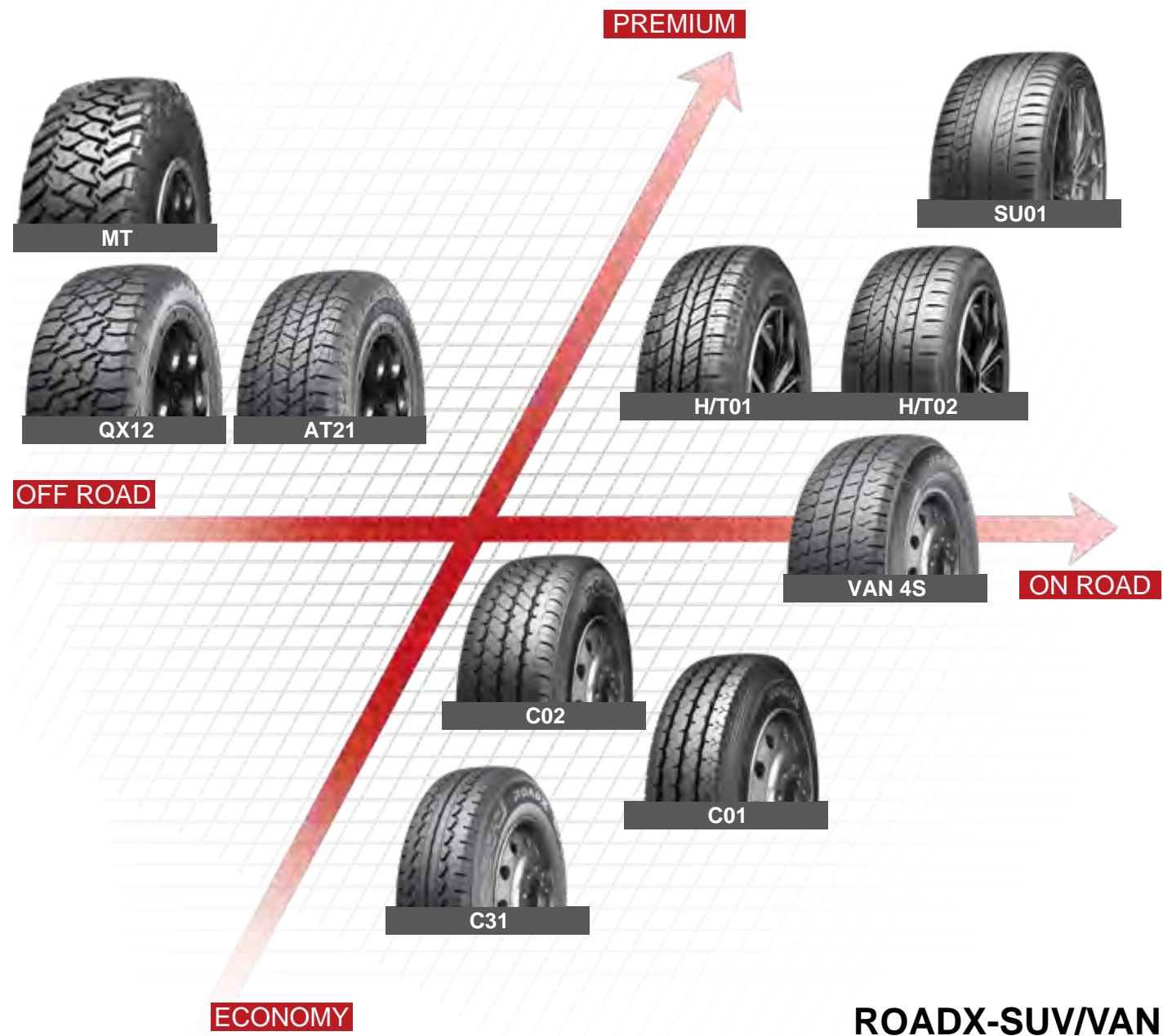
### PRODUCT POSITIONING





**RXQUEST**

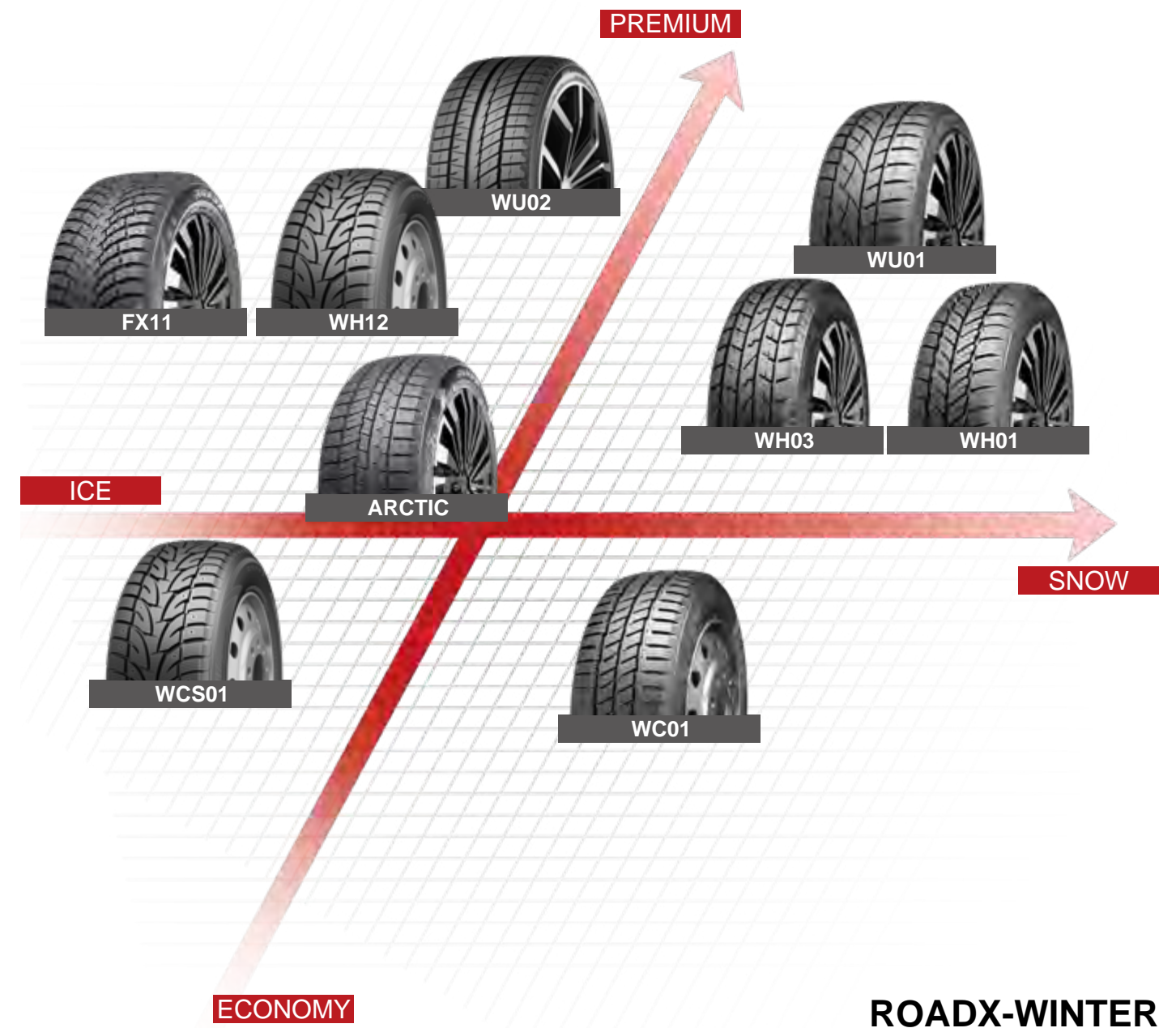
PRODUCT POSITIONING



ROADX-SUV/VAN

**RXFROST**

PRODUCT POSITIONING



ROADX-WINTER

# H11 HP

Designed with eco-friendly compounds to improve fuel efficiency and service life.



### HANDLING

Closed shoulder design strengthens shoulder blocks for superior handling performance.



### WET PERFORMANCE

Main tread grooves and sipes effectively drain water to improve grip and safety on wet roads.

### HANDLING

Two central ribs and solid shoulder blocks improve handling for greater driving stability.

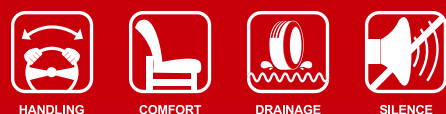


RIM	SIZE	PR	LI	SS	XL OR NOT	SIDEWALL	STANDARD RIM	UTQG	MAX LOAD (kg)	PRESSURE (kpa)	PLANT
13	155/65R13		73	T		BSW	4.50B	360/A/A	365	300	CN
13	165/65R13		77	T		BSW	5.00B	360/A/A	412	300	CN
13	145/70R13		71	T		BSW	4.50B	360/A/A	345	300	CN
13	155/70R13		75	T		BSW	4.50B	360/A/A	387	300	CN
13	165/70R13		79	T		BSW	5.00B	360/A/A	437	300	CN
13	165/70R13		83	T	XL	BSW	5.00B	360/A/A	487	340	CN
13	175/70R13		82	T		BSW	5.00B	360/A/A	475	300	CN
13	175/70R13		82	T		RWL	5 J	360/A/A	475	300	CN
13	185/70R13		86	T		BSW	5.50B	360/A/A	530	300	CN
13	185/70R13		86	T		RWL	5 1/2J	360/A/A	530	300	CN
13	145/80R13		75	T		BSW	4.00B	360/A/A	387	300	CN
13	155/80R13		79	T		BSW	4.50B	360/A/A	437	300	CN
13	165/80R13		83	T		BSW	4.50B	360/A/A	487	300	CN
14	165/60R14		75	H		BSW	5J	360/A/A	387	300	CN
14	185/60R14		82	H		BSW	5 1/2J	360/A/A	475	300	CN
14	195/60R14		86	H		BSW	6J	360/A/A	530	300	CN
14	155/65R14		75	T		BSW	4 1/2J	360/A/A	387	300	CN
14	165/65R14		79	T		BSW	5J	360/A/A	437	300	CN
14	175/65R14		82	T		BSW	5J	360/A/A	475	300	CN
14	175/65R14		86	T	XL	BSW	5J	360/A/A	530	340	CN
14	185/65R14		86	H		BSW	5 1/2J	360/A/A	530	300	CN
14	195/65R14		89	H		BSW	6J	360/A/A	580	300	CN
14	165/70R14		81	T		BSW	5J	360/A/A	462	300	CN
14	165/70R14		85	T	XL	BSW	5J	360/A/A	515	340	CN
14	175/70R14		84	T		BSW	5J	360/A/A	500	300	CN
14	175/70R14		88	T	XL	BSW	5J	360/A/A	560	340	CN
14	185/70R14		88	T		BSW	5 1/2J	360/A/A	560	300	CN
14	185/70R14		88	H		BSW	5 1/2J	360/A/A	560	300	CN
14	185/70R14		88	T		RWL	5 1/2J	360/A/A	560	300	CN
14	195/70R14		91	T		BSW	6J	360/A/A	615	300	CN
14	195/70R14		91	T		RWL	6J	360/A/A	615	300	CN
14	165/80R14		85	T		BSW	4 1/2J	360/A/A	515	300	CN
15	165/60R15		77	H		BSW	5J	360/A/A	412	300	CN



# H12 HP

Designed for safety and performance on both wet and dry roads.



## HIGH-SPEED PERFORMANCE

Asymmetric pattern design maximizes the tire's footprint for greater cornering and high-speed driving stability on dry roads.



## DRIVING SAFETY

Tread groove design effectively drains water and disperses heat.



## WET PERFORMANCE

Tread sipes effectively break through water film to improve handling and grip on wet roads.



RIM	SIZE	PR	LI	SS	XL OR NOT	SIDEWALL	STANDARD RIM	UTQG	MAX LOAD (kg)	PRESSURE (kpa)	PLANT
14	185/55R14		80	V		BSW	6J	360/A/A	450	300	CN
14	205/60R14		88	H		BSW	6J	360/A/A	560	300	CN
14	205/70R14		98	T	XL	BSW	6J	360/A/A	750	340	CN
14	205/75R14		95	T		WR	5 1/2J	360/A/A	690	300	CN
14	215/75R14		100	T		WR	6J	360/A/A	800	300	CN
15	195/45R15		78	W		BSW	6 1/2J	360/A/A	425	300	CN
15	195/50R15		82	V		BSW	6J	360/A/A	475	300	CN
15	205/50R15		89	V	XL	BSW	6 1/2J	360/A/A	580	340	CN
15	175/55R15		77	H		BSW	5 1/2J	360/A/A	412	300	CN
15	185/55R15		82	V		BSW	6J	360/A/A	475	300	CN
15	195/55R15		85	V		BSW	6J	360/A/A	515	300	CN
15	185/60R15		84	H		BSW	5 1/2J	360/A/A	500	300	CN

RIM	SIZE	PR	LI	SS	XL OR NOT	SIDEWALL	STANDARD RIM	UTQG	MAX LOAD (kg)	PRESSURE (kpa)	PLANT
15	185/60R15		88	H	XL	BSW	5 1/2J	360/A/A	560	340	CN
15	195/60R15		88	H		BSW	6J	360/A/A	560	300	CN
15	195/60R15		88	V		BSW	6J	360/A/A	560	300	CN
15	205/60R15		95	V	XL	BSW	6J	360/A/A	690	340	CN
15	215/60R15		98	V	XL	BSW	6 1/2J	360/A/A	750	340	CN
15	225/60R15		96	V		BSW	6 1/2J	360/A/A	710	300	CN
15	165/65R15		81	H		BSW	5J	360/A/A	462	300	CN
15	175/65R15		84	H		BSW	5J	360/A/A	500	300	CN
15	175/65R15		84	T		BSW	5J	360/A/A	500	300	CN
15	175/65R15		88	H	XL	BSW	5J	360/A/A	560	340	CN
15	185/65R15		88	H		BSW	5 1/2J	360/A/A	560	300	CN
15	185/65R15		92	H	XL	BSW	5 1/2J	360/A/A	630	340	CN
15	195/65R15		91	V		BSW	6J	360/A/A	615	300	CN
15	195/65R15		91	H		BSW	6J	360/A/A	615	300	CN
15	195/65R15		95	H	XL	BSW	6J	360/A/A	690	340	CN
15	195/65R15		95	H	XL	RWL	6J	360/A/A	690	340	CN
15	205/65R15		94	V		BSW	6J	360/A/A	670	300	CN
15	215/65R15		96	V		BSW	6 1/2J	360/A/A	710	300	CN
15	205/70R15		96	H		BSW	6J	360/A/A	710	300	CN
15	205/70R15		96	H		WR	6J	360/A/A	710	300	CN
15	215/70R15		98	H		BSW	6 1/2J	360/A/A	750	300	CN
15	215/70R15		98	H		WR	6 1/2J	360/A/A	750	300	CN
15	225/70R15		100	T		WR	6 1/2J	360/A/A	800	300	CN
15	205/75R15		97	T		WR	5 1/2J	360/A/A	730	300	CN
15	215/75R15		100	T		WR	6J	360/A/A	800	300	CN
15	225/75R15		102	T		WR	6J	360/A/A	850	300	CN
15	235/75R15		105	T		WR	6 1/2J	360/A/A	925	300	CN
16	195/45R16		84	W	XL	BSW	6 1/2J	360/A/A	500	340	CN
16	195/45R16		84	V	XL	BSW	6 1/2J	360/A/A	500	340	CN
16	205/45R16		87	W	XL	BSW	7J	360/A/A	545	340	CN
16	195/50R16		88	V	XL	BSW	6J	360/A/A	560	340	CN
16	185/55R16		83	V		BSW	6J	360/A/A	487	300	CN
16	185/55R16		87	V	XL	BSW	6J	360/A/A	545	340	CN
16	195/55R16		87	V		BSW	6J	360/A/A	545	300	CN
16	195/55R16		91	V	XL	BSW	6J	360/A/A	615	340	CN
16	205/55R16		91	V		BSW	6 1/2J	360/A/A	615	300	CN
16	205/55R16		91	V		BSW	6 1/2J	360/A/A	615	300	VN
16	205/55R16		94	V	XL	BSW	6 1/2J	360/A/A	670	340	CN
16	205/55R16		94	V	XL	BSW	6 1/2J	360/A/A	670	340	VN
16	175/60R16		82	H		BSW	5J	360/A/A	475	300	CN
16	185/60R16		86	H		BSW	5 1/2J	360/A/A	530	300	CN
16	195/60R16		89	V		BSW	6J	360/A/A	580	300	CN
16	205/60R16		92	V		BSW	6J	360/A/A	630	300	CN
16	205/60R16		96	V	XL	BSW	6J	360/A/A	710	340	CN
16	215/60R16		95	V		BSW	6 1/2J	360/A/A	690	300	CN
16	215/60R16		99	V	XL	BSW	6 1/2J	360/A/A	775	340	CN
16	225/60R16		102	V	XL	BSW	6 1/2J	360/A/A	850	340	CN
16	235/60R16		100	V		BSW	7J	360/A/A	800	300	CN
16	205/65R16		95	H		BSW	6J	360/A/A	690	300	CN
16	215/65R16		98	H		BSW	6 1/2J	360/A/A	750	300	CN
17	215/65R17		103	V	XL	BSW	6 1/2J	360/A/A	875	340	CN
18	215/55R18		99	V	XL	BSW	7J	360/A/A	775	340	CN

# MX440 HP

This new HP product is here to offer you exceptional driving comfort and extended mileage.



## WET PERFORMANCE

Main tread grooves offer exceptional water drainage while oblique sipes break through water film to improve grip and safety on wet roads.



## DRIVING COMFORT

All-season tread design improves tread softness and the variable shoulder design effectively reduces vibrations for overall lower noise emissions and a more comfortable driving experience.



## LONG MILEAGE

Wear resistant tread compound effectively offers greater mileage.



## EFFECTIVE BRAKING

Tread sipes effectively improve overall tread hardness thus offering better braking performance.



RIM	SIZE	PR	LI	SS	XL OR NOT	SIDEWALL	STANDARD RIM	UTQG	MAX LOAD (kg)	PRESSURE (kpa)	PLANT
13	165/60R13		73	T		BSW	5.00B	420/A/A	365	300	VN
13	175/70R13		82	T		BSW	5.00B	420/A/A	475	300	VN
14	165/55R14		72	V		BSW	5J	420/A/A	355	300	VN
14	175/65R14		82	H		BSW	5J	420/A/A	475	300	KH
14	185/65R14		86	H		BSW	5 1/2J	420/A/A	530	300	KH
14	175/70R14		84	T		BSW	5J	420/A/A	500	300	KH
14	185/70R14		88	T		BSW	5 1/2J	420/A/A	560	300	KH

RIM	SIZE	PR	LI	SS	XL OR NOT	SIDEWALL	STANDARD RIM	UTQG	MAX LOAD (kg)	PRESSURE (kpa)	PLANT
15	165/50R15		76	H	XL	BSW	5J	420/A/A	400	340	VN
15	195/50R15		82	H		BSW	6J	420/A/A	475	300	VN
15	195/50R15		86	H	XL	BSW	6J		530	340	VN
15	175/55R15		77	T		BSW	5 1/2J	420/A/A	412	300	KH
15	185/55R15		82	H		BSW	6J	420/A/A	475	300	KH
15	195/55R15		85	V		BSW	6J	420/A/A	515	300	KH
15	185/60R15		84	H		BSW	5 1/2J	420/A/A	500	300	KH
15	195/60R15		88	H		BSW	6J	420/A/A	560	300	KH
15	205/60R15		91	H		BSW	6J	420/A/A	615	300	KH
15	175/65R15		84	H		BSW	5J	420/A/A	500	300	KH
15	185/65R15		88	H		BSW	5 1/2J	420/A/A	560	300	KH
15	195/65R15		91	H		BSW	6J	420/A/A	615	300	KH
15	205/65R15		94	H		BSW	6J	420/A/A	670	300	KH
15	205/70R15		96	T		BSW	6J	420/A/A	710	300	KH
15	215/70R15		98	T		BSW	6 1/2J	420/A/A	750	300	KH
16	205/50R16		87	V		BSW	6 1/2J	420/A/A	545	300	KH
16	195/55R16		87	H		BSW	6J	420/A/A	545	300	KH
16	205/55R16		91	V		BSW	6 1/2J	420/A/A	615	300	KH
16	215/55R16		97	H	XL	BSW	7J	420/A/A	730	340	KH
16	225/55R16		99	H	XL	BSW	7J	420/A/A	775	340	KH
16	205/60R16		92	V		BSW	6J	420/A/A	630	300	KH
16	215/60R16		95	V		BSW	6 1/2J	420/A/A	690	300	KH
16	225/60R16		98	H		BSW	6 1/2J	420/A/A	750	300	KH
16	235/60R16		100	V		BSW	7J	420/A/A	800	300	KH
16	205/65R16		95	H		BSW	6J	420/A/A	690	300	KH
16	215/65R16		98	T		BSW	6 1/2J	420/A/A	750	300	KH
16	225/65R16		100	T		BSW	6 1/2J	420/A/A	800	300	KH
16	235/65R16		103	T		BSW	7J	420/A/A	875	300	KH
17	215/45R17		87	W		BSW	7J	420/A/A	545	300	KH
17	225/45R17		94	W	XL	BSW	7 1/2J	420/A/A	670	340	KH
17	205/50R17		93	V	XL	BSW	6 1/2J	420/A/A	650	340	KH
17	215/50R17		95	V	XL	BSW	7J	420/A/A	690	340	KH
17	225/50R17		94	V		BSW	7J	420/A/A	670	300	KH
17	215/55R17		94	V		BSW	7J	420/A/A	670	300	KH
17	225/55R17		97	V		BSW	7J	420/A/A	730	300	KH
17	235/55R17		99	H		BSW	7 1/2J	420/A/A	775	300	KH
17	215/60R17		96	T		BSW	6 1/2J	420/A/A	710	300	KH
17	225/60R17		99	T		BSW	6 1/2J	420/A/A	775	300	KH
17	235/60R17		102	V		BSW	7J	420/A/A	850	300	KH
17	215/65R17		99	T		BSW	6 1/2J	420/A/A	775	300	KH
17	225/65R17		102	T		BSW	6 1/2J	420/A/A	850	300	KH
18	225/45R18		95	W	XL	BSW	7 1/2J	420/A/A	690	340	KH
18	245/45R18		100	W	XL	BSW	8J	420/A/A	800	340	KH
18	235/50R18		97	H		BSW	7 1/2J	420/A/A	730	300	KH
18	235/55R18		100	V		BSW	7 1/2J	420/A/A	800	300	KH
18	225/60R18		100	H		BSW	6 1/2J	420/A/A	800	300	KH
18	235/60R18		103	H		BSW	7J	420/A/A	875	300	KH



# U01 UHP

The U01's tread compound offers excellent handling and lowers rolling resistance for improved fuel economy.



ECONOMICAL



HANDLING



DRAINAGE



RIM PROTECTION



## WET PERFORMANCE

The tread's main grooves effectively drain water for improved grip and safety on wet roads.



## DRIVING COMFORT

The varied pitch design better absorbs vibrations to improve driving comfort.



## SUMMER PERFORMANCE

The reinforced center rib and wide contact area offer better handling and braking performance for greater responsiveness.

RIM	SIZE	PR	LI	SS	XL OR NOT	SIDEWALL	STANDARD RIM	UTQG	MAX LOAD (kg)	PRESSURE (kpa)	PLANT
16	205/45ZR16		87	W	XL	BSW	7J	280/AA/A	545	340	VN
16	205/50ZR16		87	W		BSW	6 1/2J	280/AA/A	545	300	VN
17	205/40ZR17		84	W	XL	BSW	7 1/2J	280/AA/A	500	340	VN
17	205/45ZR17		88	W	XL	BSW	7J	280/AA/A	560	340	VN
17	215/45ZR17		91	W	XL	BSW	7J	280/AA/A	615	340	VN
17	225/45ZR17		94	W	XL	BSW	7 1/2J	280/AA/A	670	340	VN
17	215/50ZR17		95	W	XL	BSW	7J	280/AA/A	690	340	VN
17	225/50ZR17		98	Y	XL	BSW	7J	280/AA/A	750	340	VN
17	225/55ZR17		97	W		BSW	7J	280/AA/A	730	300	VN
18	225/40ZR18		92	W	XL	BSW	8J	280/AA/A	630	340	VN
18	235/40ZR18		95	W	XL	BSW	8 1/2J	280/AA/A	690	340	VN
18	225/45ZR18		95	W	XL	BSW	7 1/2J	280/AA/A	690	340	VN
18	235/50ZR18		101	W	XL	BSW	7 1/2J	280/AA/A	825	340	VN

# U11 UHP

Innovative high performance tire that combines comfort and fuel economy.



### FUEL ECONOMY

The tread compound effectively reduces rolling resistance for greater fuel economy.



### DRIVING COMFORT

The varied pitch design better absorbs vibrations to improve driving comfort.



### OVERALL PERFORMANCE

The asymmetric tread pattern improves grip and handling for more responsive steering and braking.



### WET PERFORMANCE

Tread pattern design effectively expels water to allow for greater grip and handling on wet roads.

RIM	SIZE	PR	LI	SS	XL OR NOT	SIDEWALL	STANDARD RIM	UTQG	MAX LOAD (kg)	PRESSURE (kpa)	PLANT
15	185/45ZR15		75	Y		BSW	6J	280/AA/A	387	300	CN
16	215/45ZR16		90	Y	XL	BSW	7J	280/AA/A	600	340	CN
16	205/50ZR16		87	W		BSW	6 1/2J	280/AA/A	545	300	CN
16	205/55ZR16		94	W	XL	BSW	6 1/2J	280/AA/A	670	340	CN
16	215/55ZR16		97	W	XL	BSW	7J	280/AA/A	730	340	CN
16	225/55ZR16		99	W	XL	BSW	7J	280/AA/A	775	340	CN
16	225/55ZR16		99	Y	XL	BSW	7J	280/AA/A	775	340	CN
17	195/40ZR17		81	Y	XL	BSW	7J	280/AA/A	462	340	CN
17	205/40ZR17		84	W	XL	BSW	7 1/2J	280/AA/A	500	340	CN
17	215/40ZR17		87	Y	XL	BSW	7 1/2J	280/AA/A	545	340	CN
17	245/40ZR17		95	W	XL	BSW	8 1/2J	280/AA/A	690	340	CN
17	185/45ZR17		82	Y	XL	BSW	6J	280/AA/A	475	340	CN
17	195/45ZR17		85	Y	XL	BSW	6 1/2J	280/AA/A	515	340	CN
17	205/45ZR17		88	W	XL	BSW	7J	280/AA/A	560	340	CN
17	215/45ZR17		91	W	XL	BSW	7J	280/AA/A	615	340	CN
17	215/45ZR17		91	Y	XL	BSW	7J	280/AA/A	615	340	CN
17	225/45ZR17		94	W	XL	BSW	7 1/2J	280/AA/A	670	340	CN
17	225/45ZR17		94	Y	XL	BSW	7 1/2J	280/AA/A	670	340	CN
17	235/45ZR17		97	W	XL	BSW	8J	280/AA/A	730	340	CN
17	245/45ZR17		99	Y	XL	BSW	8J	280/AA/A	775	340	CN
17	205/50ZR17		93	W	XL	BSW	6 1/2J	280/AA/A	650	340	CN
17	215/50ZR17		95	W	XL	BSW	7J	280/AA/A	690	340	CN
17	225/50ZR17		98	W	XL	BSW	7J	280/AA/A	750	340	CN
17	235/50ZR17		100	Y	XL	BSW	7 1/2J	280/AA/A	800	340	CN
17	205/55ZR17		95	Y	XL	BSW	6 1/2J	280/AA/A	690	340	CN
17	215/55ZR17		94	W		BSW	7J	280/AA/A	670	300	CN
17	215/55ZR17		98	W	XL	BSW	7J	280/AA/A	750	340	CN
17	225/55ZR17		101	W	XL	BSW	7J	280/AA/A	825	340	CN



# U11 UHP

Innovative high performance tire that combines comfort and fuel economy.



RIM	SIZE	PR	LI	SS	XL OR NOT	SIDEWALL	STANDARD RIM	UTQG	MAX LOAD (kg)	PRESSURE (kpa)	PLANT
18	215/35ZR18		84	Y	XL	BSW	7 1/2J	280/AA/A	500	340	CN
18	225/35ZR18		87	Y	XL	BSW	8J	280/AA/A	545	340	CN
18	235/35ZR18		90	Y	XL	BSW	8 1/2J	280/AA/A	600	340	CN
18	245/35ZR18		92	Y	XL	BSW	8 1/2J	280/AA/A	630	340	CN
18	255/35ZR18		94	Y	XL	BSW	9J	280/AA/A	670	340	CN
18	265/35ZR18		97	Y	XL	BSW	9 1/2J	280/AA/A	730	340	CN
18	215/40ZR18		89	Y	XL	BSW	7 1/2J	280/AA/A	580	340	CN
18	225/40ZR18		92	W	XL	BSW	8J	280/AA/A	630	340	CN
18	235/40ZR18		95	W	XL	BSW	8 1/2J	280/AA/A	690	340	CN
18	245/40ZR18		97	Y	XL	BSW	8 1/2J	280/AA/A	730	340	CN
18	255/40ZR18		99	Y	XL	BSW	9J	280/AA/A	775	340	CN
18	275/40ZR18		103	Y	XL	BSW	9 1/2J	280/AA/A	875	340	CN
18	215/45ZR18		93	Y	XL	BSW	7J	280/AA/A	650	340	CN
18	225/45ZR18		95	W	XL	BSW	7 1/2J	280/AA/A	690	340	CN
18	235/45ZR18		98	Y	XL	BSW	8J	280/AA/A	750	340	CN
18	245/45ZR18		100	W	XL	BSW	8J	280/AA/A	800	340	CN
18	245/45ZR18		100	Y	XL	BSW	8J	280/AA/A	800	340	CN
18	255/45ZR18		103	Y	XL	BSW	8 1/2J	280/AA/A	875	340	CN
18	225/50ZR18		95	W		BSW	7J	280/AA/A	690	300	CN
18	235/50ZR18		101	W	XL	BSW	7 1/2J	280/AA/A	825	340	CN
18	245/50R18		104	V	XL	BSW	7 1/2J	280/AA/A	900	340	CN
19	255/30ZR19		91	Y	XL	BSW	9J	280/AA/A	615	340	CN
19	265/30ZR19		93	Y	XL	BSW	9 1/2J	280/AA/A	650	340	CN
19	275/30ZR19		96	Y	XL	BSW	9 1/2J	280/AA/A	710	340	CN
19	285/30ZR19		98	Y	XL	BSW	10J	280/AA/A	750	340	CN
19	215/35ZR19		85	Y	XL	BSW	7 1/2J	280/AA/A	515	340	CN
19	225/35ZR19		88	Y	XL	BSW	8J	280/AA/A	560	340	CN
19	235/35ZR19		91	Y	XL	BSW	8 1/2J	280/AA/A	615	340	CN
19	245/35ZR19		93	Y	XL	BSW	8 1/2J	280/AA/A	650	340	CN
19	255/35ZR19		96	Y	XL	BSW	9J	280/AA/A	710	340	CN
19	265/35ZR19		98	Y	XL	BSW	9 1/2J	280/AA/A	750	340	CN
19	275/35ZR19		100	Y	XL	BSW	9 1/2J	280/AA/A	800	340	CN

RIM	SIZE	PR	LI	SS	XL OR NOT	SIDEWALL	STANDARD RIM	UTQG	MAX LOAD (kg)	PRESSURE (kpa)	PLANT
19	225/40ZR19		93	Y	XL	BSW	8J	280/AA/A	650	340	CN
19	235/40ZR19		96	Y	XL	BSW	8 1/2J	280/AA/A	710	340	CN
19	245/40ZR19		98	Y	XL	BSW	8 1/2J	280/AA/A	750	340	CN
19	275/40ZR19		105	Y	XL	BSW	9 1/2J	280/AA/A	925	340	CN
19	235/45ZR19		99	Y	XL	BSW	8J	280/AA/A	775	340	CN
19	245/45ZR19		102	Y	XL	BSW	8J	280/AA/A	850	340	CN
19	255/45ZR19		104	W	XL	BSW	8 1/2J	280/AA/A	900	340	CN
19	275/45ZR19		108	Y	XL	BSW	9J	280/AA/A	1000	340	CN
19	285/45ZR19		111	Y	XL	BSW	9 1/2J	280/AA/A	1090	340	CN
19	255/50ZR19		107	Y	XL	BSW	8J	280/AA/A	975	340	CN
19	205/55R19		97	V	XL	BSW	6 1/2J	280/AA/A	730	340	CN
20	225/30ZR20		85	Y	XL	BSW	8J	280/AA/A	515	340	CN
20	285/30ZR20		99	Y	XL	BSW	10J	280/AA/A	775	340	CN
20	245/35ZR20		95	Y	XL	BSW	8 1/2J	280/AA/A	690	340	CN
20	255/35ZR20		97	Y	XL	BSW	9J	280/AA/A	730	340	CN
20	265/35ZR20		99	Y	XL	BSW	9 1/2J	280/AA/A	775	340	CN
20	275/35ZR20		102	Y	XL	BSW	9 1/2J	280/AA/A	850	340	CN
20	295/35ZR20		105	Y	XL	BSW	10 1/2J	280/AA/A	925	340	CN
20	315/35ZR20		110	Y	XL	BSW	11J	280/AA/A	1060	340	CN
20	245/40ZR20		99	Y	XL	BSW	8 1/2J	280/AA/A	775	340	CN
20	255/40ZR20		101	Y	XL	BSW	9J	280/AA/A	825	340	CN
20	275/40ZR20		106	Y	XL	BSW	9 1/2J	280/AA/A	950	340	CN
20	275/45ZR20		110	Y	XL	BSW	9J	280/AA/A	1060	340	CN
20	245/50ZR20		102	W		BSW	7 1/2J	280/AA/A	850	300	CN
20	265/50ZR20		111	Y	XL	BSW	8 1/2J	280/AA/A	1090	340	CN
20	195/55R20		95	H	XL	BSW	6J	280/AA/A	690	340	CN
21	275/30ZR21		98	Y	XL	BSW	9 1/2J	280/AA/A	750	340	CN
21	325/30ZR21		108	Y	XL	BSW	11 1/2J	280/AA/A	1000	340	CN
21	275/35ZR21		103	Y	XL	BSW	9 1/2J	280/AA/A	875	340	CN
21	285/35ZR21		105	Y	XL	BSW	10J	280/AA/A	925	340	CN
21	295/35ZR21		107	Y	XL	BSW	10 1/2J	280/AA/A	975	340	CN
22	265/40ZR22		106	Y	XL	BSW	9 1/2J	280/AA/A	950	340	CN



# RUN-FLAT TECHNOLOGY

RUN-FLAT TECHNOLOGY GREATER SAFETY  
U11 RFT / SU01 RFT / H12 RFT



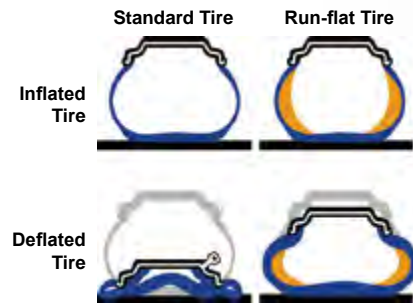
**U11 RFT**



**SU01 RFT**

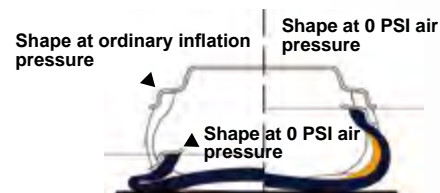


**H12 RFT**



**RFT Product Features**

1. No more delays or being stranded on remote highways due to a flat tire. RFT products will continue to drive at up to 80 KPH without having to be replaced immediately.
2. Helps to avoid accidents caused by the loss of control from punctures or air leaks, increasing overall safety.
3. Even when the tire begins leaking air you can drive to your local tire dealer to have it repaired. RFT technology also means there is no need to carry a spare which helps increase storage space within the vehicle.



Run-flat tires (RFT), also known as “self-supporting run-flat tires,” are an important safety feature for any vehicle. A Run-flat tire is built with a thicker sidewall to help support the tire shape after losing air. This allows the tire to continue to run safely, but at a limited speed and mileage. When normal tires are punctured, they can instantly lead to a severe sidewall collapse; in the event of a collapse, the vehicle loses its only support which can cause the vehicle's center of gravity to change instantaneously. RFT helps to lessen the severity of a flat tire and allows you to get to the closest destination safely.

RIM	SIZE	PR	LI	SS	XL OR NOT	SIDEWALL	STANDARD RIM	UTQG	MAX LOAD (kg)	PRESSURE (kpa)	PLANT
<b>U11 RFT</b>											
16	205/55ZRF16		94	W	XL	BSW	6 1/2J	280/AA/A	670	340	CN
16	225/55ZRF16		99	W	XL	BSW	7J	280/A/A	775	340	CN
17	205/45ZRF17		88	W	XL	BSW	7J	280/AA/A	560	340	CN
17	225/45ZRF17		94	W	XL	BSW	7 1/2J	280/AA/A	670	340	CN
17	205/50ZRF17		93	W	XL	BSW	6 1/2J	280/AA/A	650	340	CN
17	225/50ZRF17		98	W	XL	BSW	7J	280/AA/A	750	340	CN
17	205/55RF17		91	V		BSW	6 1/2J	280/A/A	615	300	CN
17	225/55ZRF17		101	W	XL	BSW	7J	280/AA/A	825	340	CN
18	245/35ZRF18		92	Y	XL	BSW	8 1/2J	280/A/A	630	340	CN
18	255/35ZRF18		94	Y	XL	BSW	9J	280/AA/A	670	340	CN
18	215/40ZRF18		85	Y		BSW	7 1/2J	280/A/A	515	300	CN
18	225/40ZRF18		92	W	XL	BSW	8J	280/AA/A	630	340	CN
18	245/40ZRF18		97	Y	XL	BSW	8 1/2J	280/AA/A	730	340	CN
18	225/45ZRF18		95	W	XL	BSW	7 1/2J	280/A/A	690	340	CN
18	245/45ZRF18		100	W	XL	BSW	8J	280/AA/A	800	340	CN
18	245/50ZRF18		100	Y		BSW	7 1/2J	280/AA/A	800	300	CN
19	255/30ZRF19		91	Y	XL	BSW	9J	280/A/A	615	340	CN
19	255/35ZRF19		96	Y	XL	BSW	9J	280/A/A	710	340	CN
19	275/35ZRF19		100	Y	XL	BSW	9 1/2J	280/AA/A	800	340	CN
19	225/40ZRF19		89	W		BSW	8J	280/A/A	580	300	CN
19	245/40ZRF19		98	Y	XL	BSW	8 1/2J	280/AA/A	750	340	CN
19	275/40ZRF19		101	Y		BSW	9 1/2J	280/A/A	825	300	CN
19	235/45ZRF19		99	W	XL	BSW	8J	280/A/A	775	340	CN
19	245/45ZRF19		102	W	XL	BSW	8J	280/A/A	850	340	CN
19	255/50RF19		103	V		BSW	8J	280/AA/A	875	300	CN
20	275/35ZRF20		102	Y	XL	BSW	9 1/2J	280/AA/A	850	340	CN
20	245/40ZRF20		99	Y	XL	BSW	8 1/2J	280/AA/A	775	340	CN
<b>SU01 RFT</b>											
18	235/50RF18		97	V		BSW	7 1/2J	280/A/A	730	300	CN
18	255/55RF18		105	H		BSW	8J	280/AA/A	925	300	CN
<b>H12 RFT</b>											
16	195/55RF16		91	V	XL	BSW	6J	360/A/A	615	340	CN



# SPARTAN II UHP

Spartan II is the first choice for gearheads. This street legal sport specific tire boasts strong grip and exceptional handling for all your on and off track sporting needs.



ECONOMICAL



HANDLING



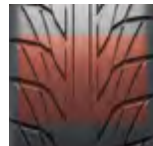
DRAINAGE



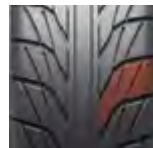
RIM PROTECTION



Widened running surface and varying tread pitch work together to improve surface contact area for improved handling and safety.



The tire shoulder utilizes a large block pattern design with improved durability to effectively improve handling stability.



Tread blocks are designed with angled grooves which help improve traction in both dry and wet driving conditions.



The tread pattern is designed for optimal handling stability as well as reduced noise emissions.



RIM	SIZE	PR	LI	SS	XL OR NOT	SIDEWALL	STANDARD RIM	UTQG	MAX LOAD (kg)	PRESSURE (kpa)	PLANT
15	195/50R15		86	V	XL	BSW	6J	180/AA/A	530	340	CN
15	195/55R15		85	V		BSW	6J	180/AA/A	515	300	CN
18	255/50R18		106	V	XL	BSW	8J	180/AA/A	950	340	CN

# RT01

## UHP

The RT01 is designed specifically for racing with a specialized motorsport compound ready to performance on the track.



ECONOMICAL



HANDLING



DRAINAGE



RIM PROTECTION



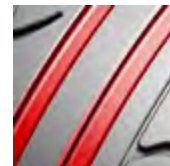
### HIGH-SPEED PERFORMANCE

Optimized tread profile and rim lip design ensure tire sturdiness for exceptional high-speed performance.



### RACE SPECIFIC

The wide shoulder design and central rib structure offer exceptional grip and handling for both cornering and straightaways.



### DURABILITY

Tread grooves improve grip and reduce potential damage to the tread when braking hard.



### DRY AND WET PERFORMANCE

The inner tread grooves effectively drain water while the outer shoulder grooves focus on improving grip.



RIM	SIZE	PR	LI	SS	XL OR NOT	SIDEWALL	STANDARD RIM	UTQG	MAX LOAD (kg)	PRESSURE (kpa)	PLANT
15	195/50R15		82	V		BSW	6J	180/AA/A	475	300	CN
17	225/45ZR17		94	W	XL	BSW	7 1/2J	180/AA/A	670	340	CN
18	265/35ZR18		97	W	XL	BSW	9 1/2J	180/AA/A	730	340	CN
18	235/40ZR18		95	W	XL	BSW	8 1/2J	180/AA/A	690	340	CN



# 4S

## ALL-SEASON

Innovative high performance tire that combines comfort and fuel economy.



### SAFETY

A unique sipe design greatly improves grip and braking responsiveness.

### DRIVING COMFORT

Tread design is optimized for a comfortable drive year-round.

### OVERALL PERFORMANCE

Tread grooves improve overall handling and driving stability.



### INNER PATTERN

Improved handling in snow and rain.

### OUTER PATTERN

Handling performance and stability in dry conditions.

RIM	SIZE	PR	LI	SS	XL OR NOT	SIDEWALL	STANDARD RIM	UTQG	MAX LOAD (kg)	PRESSURE (kpa)	PLANT
13	155/70R13		75	T		BSW	4.50B	300/A/A	387	300	CN
13	155/80R13		79	T		BSW	4.50B	300/A/A	437	300	CN
14	165/60R14		79	H	XL	BSW	5J	300/A/A	437	340	CN
14	185/60R14		82	T		BSW	5 1/2J	300/A/A	475	300	CN
14	155/65R14		75	T		BSW	4 1/2J	300/A/A	387	300	CN
14	165/65R14		79	T		BSW	5J	300/A/A	437	300	CN
14	175/65R14		82	T		BSW	5J	300/A/A	475	300	CN
14	185/65R14		86	T		BSW	5 1/2J	300/A/A	530	300	CN
14	165/70R14		85	T	XL	BSW	5J	300/A/A	515	340	CN
14	175/70R14		84	T		BSW	5J	300/A/A	500	300	CN
14	175/70R14		88	T	XL	BSW	5J	300/A/A	560	340	CN
15	195/50R15		82	H		BSW	6J	300/A/A	475	300	CN
15	185/55R15		82	H		BSW	6J	300/A/A	475	300	CN
15	195/55R15		85	H		BSW	6J	300/A/A	515	300	CN
15	185/60R15		88	H	XL	BSW	5 1/2J	300/A/A	560	340	CN
15	195/60R15		88	H		BSW	6J	300/A/A	560	300	CN
15	175/65R15		84	H		BSW	5J	300/A/A	500	300	CN
15	185/65R15		88	H		BSW	5 1/2J	300/A/A	560	300	CN
15	185/65R15		92	T	XL	BSW	5 1/2J	300/A/A	630	340	CN
15	195/65R15		91	H		BSW	6J	300/A/A	615	300	CN
16	205/45R16		87	V	XL	BSW	7J	300/A/A	545	340	CN
16	195/55R16		87	V		BSW	6J	300/A/A	545	300	CN
16	205/55R16		94	H	XL	BSW	6 1/2J	300/A/A	670	340	CN
16	205/55R16		94	V	XL	BSW	6 1/2J	300/A/A	670	340	CN
16	215/55R16		97	V	XL	BSW	7J	300/A/A	730	340	CN
16	225/55R16		99	V	XL	BSW	7J	300/A/A	775	340	CN
16	205/60R16		96	V	XL	BSW	6J	300/A/A	710	340	CN
16	215/60R16		99	V	XL	BSW	6 1/2J	300/A/A	775	340	CN
17	225/45R17		94	V	XL	BSW	7 1/2J	300/A/A	670	340	CN
17	205/50R17		93	V	XL	BSW	6 1/2J	300/A/A	650	340	CN
17	225/50R17		98	V	XL	BSW	7J	300/A/A	750	340	CN



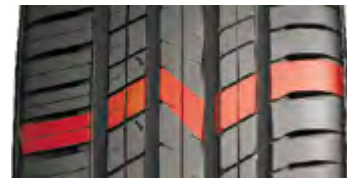
# SU01 SUV

Specially designed UHP SUV tire.



### SUMMER PERFORMANCE

The asymmetric tread pattern improves handling and braking on wet and dry roads.



### SAFETY

The center rib design improves traction for greater acceleration and braking responsiveness, overall increasing safety.

### DURABILITY

The tread compound is designed specifically to improve wear resistance.

### DRIVING COMFORT

Variable tread block pitch and sipe design reduce tire vibrations offering a more comfortable driving experience.



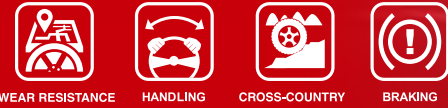
RIM	SIZE	PR	LI	SS	XL OR NOT	SIDEWALL	STANDARD RIM	UTQG	MAX LOAD (kg)	PRESSURE (kpa)	PLANT
17	235/55R17		103	W	XL	BSW	7 1/2J	280/AA/A	875	340	CN
18	275/40R18		103	W	XL	BSW	9 1/2J	280/AA/A	875	340	CN
18	215/50R18		92	W		BSW	7J	280/AA/A	630	300	CN
18	225/50R18		99	Y	XL	BSW	7J	280/AA/A	775	340	CN
18	235/50R18		97	V		BSW	7 1/2J	280/AA/A	730	300	CN
18	225/55R18		102	W	XL	BSW	7J	280/AA/A	850	340	CN
18	225/55R18		102	V	XL	BSW	7J	280/AA/A	850	340	CN
18	235/55R18		104	W	XL	BSW	7 1/2J	280/AA/A	900	340	CN
18	255/55R18		109	Y	XL	BSW	8J	280/AA/A	1030	340	CN

RIM	SIZE	PR	LI	SS	XL OR NOT	SIDEWALL	STANDARD RIM	UTQG	MAX LOAD (kg)	PRESSURE (kpa)	PLANT
18	225/60R18		100	V		BSW	6 1/2J	280/AA/A	800	300	CN
18	235/60R18		107	W	XL	BSW	7J	280/AA/A	975	340	CN
18	245/60R18		105	V		BSW	7J	280/AA/B	925	300	CN
18	255/60R18		112	V	XL	BSW	7 1/2J	280/AA/B	1120	340	CN
18	265/60R18		110	V		BSW	8J	280/AA/B	1060	300	CN
19	225/45R19		96	W	XL	BSW	7 1/2J	280/AA/A	710	340	CN
19	245/50R19		105	W	XL	BSW	7 1/2J	280/AA/A	925	340	CN
19	265/50R19		110	Y	XL	BSW	8 1/2J	280/AA/A	1060	340	CN
19	225/55R19		99	W		BSW	7J	280/AA/A	775	300	CN
19	235/55R19		101	W		BSW	7 1/2J	280/AA/A	825	300	CN
19	245/55R19		103	V		BSW	7 1/2J	280/AA/A	875	300	CN
19	255/55R19		111	Y	XL	BSW	8J	280/AA/A	1090	340	CN
20	275/35R20		102	W	XL	BSW	9 1/2J	280/AA/A	850	340	CN
20	295/35R20		105	Y	XL	BSW	10 1/2J	280/AA/A	925	340	CN
20	255/40R20		101	Y	XL	BSW	9J	280/AA/A	825	340	CN
20	285/40R20		104	Y		BSW	10J	280/AA/A	900	300	CN
20	255/45R20		105	Y	XL	BSW	8 1/2J	280/AA/A	925	340	CN
20	235/50R20		104	Y	XL	BSW	7 1/2J	280/AA/A	900	340	CN
20	255/50R20		109	Y	XL	BSW	8J	280/AA/A	1030	340	CN
20	265/50R20		111	Y	XL	BSW	8 1/2J	280/AA/A	1090	340	CN
20	285/50R20		116	W	XL	BSW	9J	280/AA/A	1250	340	CN
20	255/55R20		110	Y	XL	BSW	8J	280/AA/A	1060	340	CN
20	275/55R20		117	W	XL	BSW	8 1/2J	280/AA/A	1285	340	CN
20	275/60R20		119	V	XL	BSW	8J	280/AA/B	1360	340	CN
21	315/35R21		111	Y	XL	BSW	11J	280/AA/A	1090	340	CN
21	255/40R21		102	Y	XL	BSW	9J	280/AA/A	850	340	CN
21	265/40R21		105	Y	XL	BSW	9 1/2J	280/AA/A	925	340	CN
21	275/40R21		107	Y	XL	BSW	9 1/2J	280/AA/A	975	340	CN
21	285/40R21		109	Y	XL	BSW	10J	280/AA/A	1030	340	CN
21	245/45R21		104	Y	XL	BSW	8J	280/AA/A	900	340	CN
21	265/45R21		108	Y	XL	BSW	9J	280/AA/A	1000	340	CN
21	275/45R21		110	Y	XL	BSW	9J	280/AA/A	1060	340	CN
22	265/35R22		102	W	XL	BSW	9 1/2J	280/AA/A	850	340	CN
22	265/35R22		102	Y	XL	BSW	9 1/2J	280/AA/A	850	340	CN
22	285/35R22		106	Y	XL	BSW	10J	280/AA/A	950	340	CN
22	305/40R22		114	W	XL	BSW	11J	280/AA/A	1180	340	CN
22	285/45R22		114	W	XL	BSW	9 1/2J	280/AA/A	1180	340	CN
22	305/45R22		118	W	XL	BSW	10J	280/AA/A	1320	340	CN



# H/T01 SUV

Optimized high performance urban on and off-road pattern suitable for pickups and SUVs with excellent endurance and low noise emissions.



### ON & OFF-ROAD PERFORMANCE

The ladder-like design within the tread grooves improves tread strength, handling, and effectively reduces stone retention.

### WET PERFORMANCE

Wide grooves effectively drain water for improved grip and handling on wet roads.

### DRIVING COMFORT

The precision spaced tread blocks and grooves effectively reduce tire noise emissions.



RIM	SIZE	PR	LI	SS	XL OR NOT	SIDEWALL	STANDARD RIM	UTQG	MAX LOAD (kg)	PRESSURE (kpa)	PLANT
14	205/75R14		95	S		WR	5 1/2J	480/A/B	690	300	CN
14	215/75R14		100	S		WR	6J	480/A/B	800	300	CN
15	205/70R15		96	T		WR	6J	480/A/B	710	300	CN
15	215/70R15		98	T		WR	6 1/2J	480/A/B	750	300	CN
15	225/70R15		100	T		BSW	6 1/2J	480/A/B	800	300	CN
15	225/70R15		100	T		WR	6 1/2J	480/A/B	800	300	CN
15	205/75R15		97	T		WR	5 1/2J	480/A/B	730	300	CN
15	215/75R15		100	S		BSW	6J	480/A/B	800	300	CN
15	215/75R15		100	T		BSW	6J	480/A/B	800	300	CN
15	215/75R15		100	T		WR	6J	480/A/B	800	300	CN
15	225/75R15		102	T		BSW	6J	480/A/B	850	300	CN

RIM	SIZE	PR	LI	SS	XL OR NOT	SIDEWALL	STANDARD RIM	UTQG	MAX LOAD (kg)	PRESSURE (kpa)	PLANT
15	225/75R15		102	T		WR	6J	480/A/B	850	300	CN
15	235/75R15		105	S		BSW	6 1/2J	480/A/B	925	300	CN
15	235/75R15		105	T		BSW	6 1/2J	480/A/B	925	300	CN
15	235/75R15		105	T		WR	6 1/2J	480/A/B	925	300	CN
15	235/75R15		105	S		BSW	6 1/2J	480/A/B	925	300	VN
16	215/65R16		98	T		BSW	6 1/2J	480/A/B	750	300	CN
16	215/65R16		98	H		BSW	6 1/2J	480/A/B	750	300	CN
16	215/70R16		100	T		BSW	6 1/2J	480/A/B	800	300	CN
16	215/70R16		100	H		BSW	6 1/2J	480/A/B	800	300	CN
16	215/70R16		100	T		BSW	6 1/2J	480/A/B	800	300	VN
16	225/70R16		103	T		BSW	6 1/2J	480/A/B	875	300	CN
16	235/70R16		106	T		BSW	7J	480/A/B	950	300	CN
16	245/70R16		111	T	XL	BSW	7J	480/A/B	1090	340	CN
16	245/70R16		111	T	XL	BSW	7J	480/A/B	1090	340	VN
16	255/70R16		111	T		BSW	7 1/2J	480/A/B	1090	300	CN
16	265/70R16		112	S		BSW	8J	480/A/B	1120	300	CN
16	265/70R16		112	S		BSW	8J	480/A/B	1120	300	VN
17	215/60R17		96	H		BSW	6 1/2J	480/A/A	710	300	CN
17	215/60R17		96	H		BSW	6 1/2J	480/A/A	710	300	VN
17	225/65R17		102	S		BSW	6 1/2J	480/A/B	850	300	CN
17	225/65R17		102	H		BSW	6 1/2J	480/A/B	850	300	CN
17	225/65R17		106	H	XL	BSW	6 1/2J	480/A/B	950	340	CN
17	235/65R17		104	S		BSW	7J	480/A/B	900	300	CN
17	235/65R17		104	V		BSW	7J	480/A/B	900	300	CN
17	245/65R17		107	S		BSW	7J	480/A/B	975	300	CN
17	245/65R17		111	T	XL	BSW	7J	480/A/B	1090	340	CN
17	265/65R17		112	S		BSW	8J	480/A/B	1120	300	CN
17	265/65R17		112	T		BSW	8J	480/A/B	1120	300	CN
17	265/65R17		112	S		BSW	8J	480/A/B	1120	300	VN
17	265/70R17		115	T		BSW	8J	480/A/B	1215	300	CN
17	245/75R17		112	T		WR	7J	480/A/B	1120	300	CN
18	235/60R18		107	H	XL	BSW	7J	480/A/A	975	340	CN
18	235/60R18		107	H	XL	BSW	7J	480/A/A	975	340	VN
18	235/65R18		106	H		BSW	7J	480/A/B	950	300	CN
18	265/65R18		114	H		BSW	8J	480/A/B	1180	300	CN

# H/T02 SUV

Truck and SUV tire that offers excellent endurance and handling performance.



### WET PERFORMANCE

Tread grooves effectively drain water and improve wet traction for overall enhanced safety.

### LONGER LIFE

The tread compound is designed for improved wear resistance therefore offering longer tread life.

### DRIVING COMFORT

The tread pitch is optimally designed to reduce noise emissions and offer a more comfortable ride.

### SUMMER PERFORMANCE

The asymmetric tread pattern improves handling and braking on wet and dry roads.



RIM	SIZE	PR	LI	SS	XL OR NOT	SIDEWALL	STANDARD RIM	UTQG	MAX LOAD (kg)	PRESSURE (kpa)	PLANT
15	255/70R15		108	T		BSW	7 1/2J	420/A/B	1000	300	CN
15	265/70R15		112	T		BSW	8J	420/A/B	1120	300	CN
16	275/70R16		114	H		BSW	8J	420/A/B	1180	300	CN
17	225/60R17		99	H		BSW	6 1/2J	420/A/A	775	300	CN
17	235/60R17		102	H		BSW	7J	420/A/A	850	300	CN
17	255/60R17		106	H		BSW	7 1/2J	420/A/B	950	300	CN
17	235/65R17		104	H		BSW	7J	420/A/B	900	300	CN
17	255/65R17		110	H		BSW	7 1/2J	420/A/B	1060	300	CN
17	275/65R17		115	H		BSW	8J	420/A/B	1215	300	CN
17	285/65R17		116	H		BSW	8 1/2J	420/A/B	1250	300	CN
17	245/70R17		110	T		BSW	7J	420/A/B	1060	300	CN
18	235/55R18		104	V	XL	BSW	7 1/2J	420/A/A	900	340	CN
18	255/55R18		105	V		BSW	8J	420/A/A	925	300	CN
18	225/60R18		100	H		BSW	6 1/2J	420/A/A	800	300	CN
18	235/60R18		107	V	XL	BSW	7J	420/A/A	975	340	CN
18	245/60R18		105	H		BSW	7J	420/A/B	925	300	CN
18	265/60R18		110	H		BSW	8J	420/A/B	1060	300	CN
18	285/60R18		116	V		BSW	8 1/2J	420/A/B	1250	300	CN
18	285/60R18		116	H		BSW	8 1/2J	420/A/B	1250	300	CN
18	275/65R18		116	H	XL	BSW	8J	420/A/B	1250	340	CN
18	255/70R18		116	H	XL	BSW	7 1/2J	420/A/B	1250	340	CN
18	265/70R18		116	T		BSW	8J	420/A/B	1250	300	CN
19	255/50R19		103	V		BSW	8J	420/A/A	875	300	CN
19	235/55R19		101	V		BSW	7 1/2J	420/A/A	825	300	CN
19	235/55R19		105	V	XL	BSW	7 1/2J	420/A/A	925	340	CN
19	255/60R19		109	H		BSW	7 1/2J	420/A/A	1030	300	CN
20	225/35R20		90	W	XL	BSW	8J	420/A/A	600	340	CN
20	245/45R20		103	W	XL	BSW	8J	480/A/A	875	340	CN
20	245/50R20		105	V	XL	BSW	7 1/2J	420/A/A	925	340	CN
20	255/50R20		109	V	XL	BSW	8J	420/A/A	1030	340	CN
20	235/55R20		105	V	XL	BSW	7 1/2J	420/A/A	925	340	CN
20	255/55R20		110	V	XL	BSW	8J	420/A/A	1060	340	CN
20	265/55R20		109	V		BSW	8 1/2J	420/A/A	1030	300	CN
20	275/55R20		113	H		BSW	8 1/2J	420/A/A	1150	300	CN
20	275/60R20		115	S		BSW	8J	420/A/B	1215	300	CN
21	275/50R21		113	W	XL	BSW	8 1/2J	420/A/A	1150	340	CN
22	275/40ZR22		107	Y	XL	BSW	9 1/2J	420/A/A	975	340	CN
22	275/50R22		111	H		BSW	8 1/2J	420/A/A	1090	300	CN



# QX12 SUV-AT

The QX12 is the perfect all-terrain (A/T) tire for light truck, SUV and crossover drivers. The advanced tread pattern and aggressive sidewall will handle all you can throw at it, in both on-and-off road terrains.



WEAR RESISTANCE



CROSS-COUNTRY



PUNCTURE RESISTANT



RESILIENT



3PMSF

## ON & OFF-ROAD PERFORMANCE

Wide shoulders provide excellent grip in wet conditions while the tread offers an optimized contact patch for maximum traction and stability.



## OFF-ROAD PERFORMANCE

Built to last, the aggressive shoulder design increases off-road bite while also protecting the rim so you can take on any trail with confidence.



## QUIET DRIVE

Tread block edges are in a step style design which reduces stone retention and reduces road noise for a smooth and quiet drive.



## WINTER CERTIFIED

3PMSF certification denotes a true winter tire for severe winter service, and meets severe snow service requirements for RMA/RAC standards.



RIM	SIZE	PR	LI	SS	XL OR NOT	SIDEWALL	STANDARD RIM	UTQG	MAX LOAD (kg)	PRESSURE (kpa)	PLANT
15	LT235/75R15	6PR	104/101	R		BSW	6 1/2J		900/825	350	KH
15	235/75R15		109	S	XL	BSW	6 1/2J	600/A/B	1030	340	KH
15	31x10.50R15LT	6PR	109	S		BSW	8 1/2J		1030	350	KH
16	235/70R16		106	S		BSW	7J	600/A/B	950	300	KH
16	265/70R16		112	T		BSW	8J	600/A/B	1120	300	KH
16	LT225/75R16	10PR	115/112	S		BSW	6J		1215/1120	550	KH
16	245/75R16		111	S		BSW	7J	600/A/B	1090	300	KH
16	LT245/75R16	10PR	120/116	S		BSW	7J		1380/1260	550	KH
16	265/75R16		116	S		BSW	7 1/2J	600/A/B	1250	300	KH
16	LT265/75R16	10PR	123/120	S		BSW	7 1/2J		1550/1400	550	KH
16	LT285/75R16	10PR	126/123	S		BSW	8J		1700/1550	550	KH
16	LT235/85R16	10PR	120/116	S		BSW	6 1/2J		1380/1260	550	KH
17	235/65R17		104	S		BSW	7J	600/A/B	900	300	KH
17	245/65R17		107	S		BSW	7J	600/A/B	975	300	KH
17	265/65R17		112	S		BSW	8J	600/A/B	1120	300	KH
17	245/70R17		110	T		BSW	7J	600/A/B	1060	300	KH
17	LT245/70R17	10PR	119/116	S		BSW	7J		1360/1250	550	KH
17	265/70R17		115	S		BSW	8J	600/A/B	1215	300	KH
17	LT265/70R17	10PR	121/118	S		BSW	8J		1450/1320	550	KH
17	LT285/70R17	10PR	121/118	S		BSW	8 1/2J		1450/1320	550	KH
17	LT245/75R17	10PR	121/118	S		BSW	7J		1450/1320	550	KH
17	LT235/80R17	10PR	120/117	R		BSW	6 1/2J		1400/1285	550	KH
18	265/65R18		114	T		BSW	8J	600/A/B	1180	300	KH
18	275/65R18		116	T		BSW	8J	600/A/B	1250	300	KH
18	LT275/65R18	10PR	123/120	S		BSW	8J		1550/1400	550	KH
18	LT265/70R18	10PR	124/121	R		BSW	8J		1600/1450	550	KH
18	LT275/70R18	10PR	125/122	R		BSW	8J		1650/1500	550	KH
20	265/50R20		111	T	XL	BSW	8 1/2J	600/A/B	1090	340	KH
20	LT275/55R20	8PR	115/112	S		BSW	8 1/2J		1215/1120	450	KH
20	275/55R20		117	T	XL	BSW	8 1/2J	600/A/B	1285	340	CN
20	275/55R20		117	T	XL	BSW	8 1/2J	600/A/B	1285	340	KH
20	LT305/55R20	10PR	121/118	R		BSW	9 1/2J		1450/1320	450	KH
20	LT265/60R20	10PR	121/118	R		BSW	8J		1450/1320	550	KH
20	275/60R20		115	T		BSW	8J	600/A/B	1215	300	KH
20	LT275/60R20	10PR	123/120	R		BSW	8J		1550/1400	550	KH
20	LT275/65R20	10PR	126/123	S		BSW	8J		1700/1550	550	KH

1inch=25.4mm | kPa=0.142psi | 1KG=2.2 lbs | XL Extra Load | I Load Index | SS Speed Symbol  
SBL: Serrated Black Letter | OWL: Outlined White Letter



# AT21 SUV-AT

An all weather tire offering exceptional off-road performance, reduced noise emissions for better driving comfort, and excellent load bearing capabilities.



WEAR RESISTANCE CROSS-COUNTRY PUNCTURE RESISTANT RESILIENT



## WET PERFORMANCE

Tread block sipes break through water film and grip snow while tread grooves expel water and snow to offer exceptional wet performance.

## SAFETY

Optimized tread contour, wide tread and square shoulder design help to improve overall driving safety.

## ON-ROAD PERFORMANCE

Stepped tread block edges effectively reduce stone retention, noise emissions, and improve tire contact area for better driving responsiveness and comfort.

## OFF-ROAD PERFORMANCE

Aggressive shoulder design increases off-road bite while also protecting the rim so you can take on any trail with confidence.



Stepped tread block edges effectively reduce stone retention, reduce noise emissions, and improve tire contact area for exceptional braking and traction on dry surfaces.

The protruding sidewall blocks protect the tire in extreme off-road conditions while also offering extra traction in mud.



RIM	SIZE	PR	LI	SS	XL OR NOT	SIDEWALL	STANDARD RIM	UTQG	MAX LOAD (kg)	PRESSURE (kpa)	PLANT
15	215/75R15		100	T		OWL	6J		800	300	CN
15	LT215/75R15	6PR	100/97	S		OWL	6J		730/800	350	CN
15	235/75R15		109	T	XL	OWL	6 1/2J		1030	340	CN
15	31x10.50R15LT	6PR	109	S		OWL	8 1/2J		1030	350	CN
16	215/70R16		100	T		OWL	6 1/2J	600/A/B	800	300	CN
16	235/70R16		106	T		OWL	7J		950	300	CN
16	245/70R16		111	H	XL	OWL	7J	600/A/B	1090	340	CN
16	LT245/70R16	8PR	113/110	S		OWL	7J		1060/1150	450	CN
16	265/70R16		112	H		OWL	8J		1120	300	CN
16	LT225/75R16	10PR	115/112	S		OWL	6J		1120/1215	550	CN
16	245/75R16		111	T		OWL	7J	600/A/B	1090	300	CN
16	LT245/75R16	10PR	120/116	S		OWL	7J		1260/1380	550	CN
16	LT265/75R16	10PR	123/120	S		OWL	7 1/2J		1400/1550	550	CN
16	205R16C	8PR	110/108	S		OWL	6J		1000/1060	450	CN
16	LT235/85R16	10PR	120/116	S		OWL	6 1/2J		1260/1380	550	CN
17	225/65R17		102	H		OWL	6 1/2J	600/A/B	850	300	CN
17	235/65R17		108	H	XL	OWL	7J	600/A/B	1000	340	CN
17	245/65R17		111	H	XL	OWL	7J		1090	340	CN
17	265/65R17		112	H		OWL	8J		1120	300	CN
18	265/60R18		110	T		OWL	8J	600/A/B	1060	300	CN
20	265/50R20		111	T	XL	OWL	8 1/2J	600/A/B	1090	340	CN
20	275/55R20		117	T	XL	OWL	8 1/2J		1285	340	CN



# M/T SUV

Specially designed for cross-country enthusiasts.



### TOUGHNESS

The shield design which extends onto the sidewall protects from abrasions and increases traction on muddy roads.



### OFF-ROAD GRIP

Deepend grooves effectively discharges mud and allows for better grip on both muddy and rocky roads.



### OFF-ROAD HANDLING

Large shoulder blocks greatly enhance handling on muddy and rocky roads.

RIM	SIZE	PR	LI	SS	XL OR NOT	SIDEWALL	STANDARD RIM	UTQG	MAX LOAD (kg)	PRESSURE (kpa)	PLANT
15	LT235/75R15	6PR	104/101	Q		OWL	6 1/2J		900/825	350	CN
15	30x9.50R15LT	6PR	104	Q		OWL	7 1/2J		900	350	CN
15	33x12.50R15LT	6PR	108	Q		OWL	10J		1000	250	CN
15	31x10.50R15LT	6PR	109	Q		OWL	8 1/2J		1030	350	CN
15	35x12.50R15LT	6PR	113	Q		OWL	10J		1150	250	CN
16	LT245/75R16	10PR	120/116	Q		OWL	7J		1380/1260	550	CN
16	LT265/75R16	10PR	123/120	Q		OWL	7 1/2J		1550/1400	550	CN
16	LT235/85R16	10PR	120/116	Q		OWL	6 1/2J		1380/1260	550	CN
17	LT265/65R17	10PR	120/117	Q		OWL	8J		1400/1285	550	CN
17	LT265/70R17	10PR	121/118	Q		OWL	8J		1450/1320	550	CN
17	LT285/70R17	10PR	121/118	Q		OWL	8 1/2J		1450/1320	550	CN
17	33x12.50R17LT	8PR	114	Q		OWL	10J		1180	350	CN
17	35x12.50R17LT	10PR	121	Q		OWL	10J		1450	450	CN
18	33x12.50R18LT	10PR	118	Q		BSW	10J		1320	450	CN
18	35x12.50R18LT	10PR	123	Q		BSW	10J		1550	450	CN
20	LT305/55R20	10PR	121/118	Q		BSW	9 1/2J		1450/1320	450	CN
20	33x12.50R20LT	10PR	114	Q		BSW	10J		1180	450	CN
20	35x12.50R20LT	10PR	121	Q		BSW	10J		1450	450	CN

# C01

## LTC

Optimized for performance on wet and dry road conditions, the C01 offers improved wear resistance for a longer tread life.



RIM	SIZE	PR	LI	SS	XL OR NOT	SIDEWALL	STANDARD RIM	UTQG	MAX LOAD (kg)	PRESSURE (kpa)	PLANT
15	6.50R15LT	10PR	106/101	N		BSW	5.50F		950/825	560	CN
15	7.00R15LT	10PR	109/105	N		BSW	5.50F		1030/925	560	CN
15	7.00R15LT	10PR	109/105	L		BSW	5.50F		1030/925	560	CN
16	6.50R16LT	10PR	107/102	N		BSW	5.50F		975/850	560	CN
16	7.00R16LT	12PR	115/110	N		BSW	5.50F		1215/1060	670	CN



### GREATER SERVICEABILITY

The s-shaped grooves and ribs efficiently drain water and reduce stone retention.



### LONGER LIFE

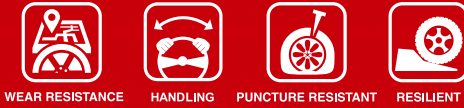
Optimized tread block design improves ground contact area and evenly distributes pressure to help promote even tread wear.





# C02 LTC

Optimized for commercial vehicles, the C02 offers exceptional load bearing performance, extended tire life, and improved driving comfort.



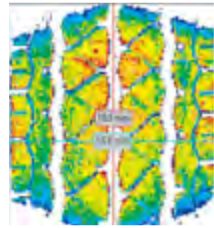
### SUMMER PERFORMANCE

Tread pattern is designed for excellent performance and driving comfort on both wet and dry roads.



### CARRYING CAPACITY

A new profile design and strengthened carcass improve the tire's overall load bearing capabilities.



### OVERALL PERFORMANCE

Wide and deep grooves increase wear resistance, efficiently drain water, and provide greater handling and driving stability.



RIM	SIZE	PR	LI	SS	XL OR NOT	SIDEWALL	STANDARD RIM	UTQG	MAX LOAD (kg)	PRESSURE (kpa)	PLANT
14	175/65R14C	6PR	90/88	T		BSW	5J		600/560	375	CN
14	175/70R14C	6PR	95/93	Q		BSW	5J		690/650	375	CN
14	205/75R14C	8PR	109/107	Q		WR	5 1/2J		1030/975	475	CN
14	175R14C	8PR	99/98	Q		BSW	5J		775/750	450	CN
14	185R14C	8PR	102/100	Q		BSW	5 1/2J		850/800	450	CN
14	185R14C	8PR	102/100	Q		BSW	5 1/2J		850/800	450	VN
14	195R14C	8PR	106/104	Q		BSW	5 1/2J		950/900	450	CN
14	195R14C	8PR	106/104	Q		WR	5 1/2J		950/900	450	CN
14	205R14C	8PR	109/107	R		BSW	6J		1030/975	450	CN
14	205R14C	10PR	112/110	R		BSW	6J		1120/1060	550	CN
15	205/65R15C	6PR	102/100	R		BSW	6J		850/800	375	CN
15	215/65R15C	6PR	104/102	T		BSW	6 1/2J		900/850	375	CN
15	195/70R15C	8PR	104/102	R		BSW	6J		900/850	450	CN
15	195/70R15C	10PR	104/102	R		BSW	6J		900/850	450	VN
15	205/70R15C	8PR	106/104	R		BSW	6J		950/900	450	CN
15	215/70R15C	8PR	109/107	S		BSW	6 1/2J		1030/975	450	CN
15	215/70R15C	8PR	109/107	S		WR	6.5J		1030/975	450	CN
15	225/70R15C	8PR	112/110	R		BSW	6 1/2J		1120/1060	450	CN
15	225/70R15C	8PR	112/110	R		WR	6.5J		1120/1060	450	CN
15	185R15C	8PR	103/102	R		BSW	5 1/2J		875/850	450	CN
15	195R15C	8PR	106/104	R		BSW	5 1/2J		950/900	450	CN
15	195R15C	8PR	106/104	R		WR	5 1/2J		950/900	450	CN
15	215R15C	8PR	109/107	R		WR	6J		1030/975	450	CN
16	195/60R16C	6PR	99/97	T		BSW	6J		775/730	375	CN
16	195/60R16C	6PR	99/97	H		BSW	6J		775/730	375	CN
16	215/60R16C	6PR	103/101	T		BSW	6 1/2J		875/825	375	CN
16	195/65R16C	8PR	104/102	R		BSW	6J		900/850	475	CN
16	205/65R16C	8PR	107/105	R		BSW	6J		975/925	475	CN
16	215/65R16C	8PR	109/107	R		BSW	6 1/2J		1030/975	475	CN
16	225/65R16C	8PR	112/110	R		BSW	6 1/2J		1120/1060	475	CN
16	235/65R16C	8PR	115/113	R		BSW	7J		1215/1150	475	CN
16	235/65R16C	10PR	121/119	R		BSW	7J		1450/1360	575	CN
16	285/65R16C	10PR	128	R		BSW	8 1/2J		1800	525	CN
16	215/70R16C	6PR	108/106	Q		BSW	6 1/2J		1000/950	375	CN
16	185/75R16C	8PR	104/102	R		BSW	5J		900/850	475	CN
16	195/75R16C	8PR	107/105	R		BSW	5 1/2J		975/925	475	CN
16	195/75R16C	8PR	107/105	R		BSW	5 1/2J		975/925	475	VN
16	195/75R16C	10PR	110/108	R		BSW	5 1/2J		1060/1000	525	CN
16	205/75R16C	8PR	110/108	R		BSW	5 1/2J		1060/1000	475	CN
16	205/75R16C	10PR	113/111	R		BSW	5 1/2J		1150/1090	525	CN
16	215/75R16C	10PR	116/114	R		BSW	6J		1250/1180	525	CN
16	225/75R16C	10PR	121/120	R		BSW	6J		1450/1400	575	CN
16	175R16C	8PR	101/99	R		BSW	5J		825/775	450	CN
16	205R16C	8PR	110/108	R		BSW	6J		1060/1000	450	CN
17	225/55R17C	8PR	109/107	H		BSW	7 J		1030/975	475	CN
17	215/60R17C	8PR	109/107	T		BSW	6 1/2J		1030/975	475	CN
17	225/70R17C	6PR	112/110	R		BSW	6 1/2J		1120/1060	375	CN

RIM	SIZE	PR	LI	SS	XL OR NOT	SIDEWALL	STANDARD RIM	UTQG	MAX LOAD (kg)	PRESSURE (kpa)	PLANT
12	145R12C	6PR	80/78	P		BSW	4.00B		450/425	350	CN
12	145R12C	8PR	86/84	P		BSW	4.00B		530/500	450	CN
12	155R12C	8PR	88/86	P		BSW	4.50B		560/530	450	CN
13	165/70R13C	6PR	88/86	Q		BSW	5.00B		560/530	375	CN
13	155R13C	6PR	85/83	Q		BSW	4.50B		515/487	350	CN
13	165R13C	8PR	94/93	S		BSW	4.50B		670/650	450	CN
13	175R13C	8PR	97/95	S		BSW	5.00B		730/690	450	CN

1inch=25.4mm | kPa=0.142psi | 1KG=2.2 lbs | XL Extra Load | LI Load Index | SS Speed Symbol  
BSW Black Sidewall

# C31

## LTC

The C31 is an economic pattern offering a deep tread and improved contour design for overall improved performance and service life.



### OVERALL PERFORMANCE

The tread is designed to increase ground contact area for improved handling and durability.



### SERVICE LIFE

The optimized tread contour and internal structure design effectively reduce heat buildup to effectively improve service life.



### SAFETY

Tread grooves effectively eject water and reduce stone retention for improved grip, driving comfort, and overall safety.



RIM	SIZE	PR	LI	SS	XL OR NOT	SIDEWALL	STANDARD RIM	UTQG	MAX LOAD (kg)	PRESSURE (kpa)	PLANT
14	185R14C	8PR	102/100	Q		BSW	5 1/2J		850/800	450	CN
14	185R14C	8PR	102/100	Q		WR	5 1/2J		850/800	450	CN
14	195R14C	8PR	106/104	Q		BSW	5 1/2J		950/900	450	CN
14	195R14C	8PR	106/104	Q		WR	5 1/2J		950/900	450	CN
15	195R15C	8PR	106/104	R		BSW	5 1/2J		950/900	450	CN
15	195R15C	8PR	106/104	R		WR	5 1/2J		950/900	450	CN
15	205/70R15C	8PR	106/104	R		BSW	6J		950/900	450	CN
15	205/70R15C	8PR	106/104	R		WR	6J		950/900	450	CN



# VAN 4S LTC

The VAN 4S is an all-season tire created specifically for commercial applications.



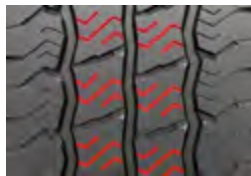
### WET PERFORMANCE

Main tread grooves help to maximize traction and offers excellent water draining on wet roads.



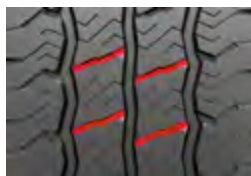
### SNOW PERFORMANCE

The multi-angle tread block sipes improve traction in snow and mud.



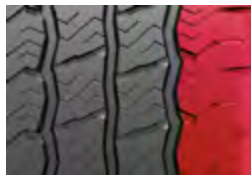
### DRIVING COMFORT

Channels built between the tread blocks reduce tire vibrations for less noise emissions and improved driving comfort.



### SERVICE LIFE

Extra wide shoulders promote even tread wear and improve high-speed stability.



RIM	SIZE	PR	LI	SS	XL OR NOT	SIDEWALL	STANDARD RIM	UTQG	MAX LOAD (kg)	PRESSURE (kpa)	PLANT
15	205/65R15C	6PR	102/100	T		BSW	6J		850/800	375	CN
15	195/70R15C	8PR	104/102	T		BSW	6J		900/850	450	CN
15	205/70R15C	8PR	106/104	T		BSW	6J		950/900	450	CN
15	215/70R15C	8PR	109/107	T		BSW	6 1/2J		1030/975	450	CN
15	225/70R15C	8PR	112/110	T		BSW	6 1/2J		1120/1060	450	CN
16	195/60R16C	6PR	99/97	H		BSW	6J		775/730	375	CN
16	195/65R16C	8PR	104/102	T		BSW	6J		900/850	475	CN
16	205/65R16C	8PR	107/105	T		BSW	6J		975/925	475	CN
16	215/65R16C	8PR	109/107	T		BSW	6 1/2J		1030/975	475	CN
16	225/65R16C	8PR	112/110	T		BSW	6 1/2J		1120/1060	475	CN
16	235/65R16C	8PR	115/113	T		BSW	7J		1215/1150	475	CN
16	195/75R16C	8PR	107/105	T		BSW	5 1/2J		975/925	475	CN
16	205/75R16C	8PR	110/108	T		BSW	5 1/2J		1060/1000	475	CN
16	215/75R16C	8PR	113/111	T		BSW	6J		1150/1090	475	CN



# WU01 WINTER UHP STUDLESS

WU01 is equipped with a special tread compound and wide tread that offers excellent performance on ice and snow.



### WINTER SAFETY

The tread maintains softness in low temperatures to ensure passenger safety while serrated sipes improve grip on ice and snow.

### WINTER PERFORMANCE

Three main grooves provide great handling in extreme winter weather conditions by efficiently draining snow and ice.

### WINTER GRIP

The sides of the main grooves are equipped with a serrated design that helps improve grip on ice and snow.



RIM	SIZE	PR	LI	SS	XL OR NOT	SIDEWALL	STANDARD RIM	UTQG	MAX LOAD (kg)	PRESSURE (kpa)	PLANT
14	185/60R14		82	T		BSW	5 1/2J		475	300	CN
15	195/65R15		95	T	XL	BSW	6J		690	340	CN
15	205/65R15		94	H		BSW	6J		670	300	CN
16	205/55R16		91	H		BSW	6 1/2J		615	300	CN
16	215/55R16		97	H	XL	BSW	7J		730	340	CN
16	225/55R16		99	H	XL	BSW	7J		775	340	CN
16	215/60R16		99	H	XL	BSW	6 1/2J		775	340	CN
16	225/60R16		98	H		BSW	6 1/2J		750	300	CN
16	215/65R16		98	H		BSW	6 1/2J		750	300	CN
17	205/45R17		88	H	XL	BSW	7J		560	340	CN
17	205/45R17		88	V	XL	BSW	7J		560	340	CN
17	215/45R17		87	H		BSW	7J		545	300	CN

RIM	SIZE	PR	LI	SS	XL OR NOT	SIDEWALL	STANDARD RIM	UTQG	MAX LOAD (kg)	PRESSURE (kpa)	PLANT
17	215/45R17		87	V		BSW	7J		545	300	CN
17	225/45R17		91	H		BSW	7 1/2J		615	300	CN
17	225/45R17		91	V		BSW	7 1/2J		615	300	CN
17	235/45R17		94	H		BSW	8J		670	300	CN
17	235/45R17		94	V		BSW	8J		670	300	CN
17	205/50R17		89	H		BSW	6 1/2J		580	300	CN
17	205/50R17		89	V		BSW	6 1/2J		580	300	CN
17	225/50R17		98	H	XL	BSW	7J		750	340	CN
17	225/50R17		98	V	XL	BSW	7J		750	340	CN
17	205/55R17		95	H	XL	BSW	6 1/2J		690	340	CN
17	215/55R17		94	H		BSW	7J		670	300	CN
17	215/55R17		94	V		BSW	7J		670	300	CN
17	225/55R17		97	H		BSW	7J		730	300	CN
17	225/55R17		97	V		BSW	7J		730	300	CN
17	235/55R17		99	H		BSW	7 1/2J		775	300	CN
17	225/65R17		102	S		BSW	6 1/2J		850	300	CN
17	225/65R17		102	T		BSW	6 1/2J		850	300	CN
17	235/65R17		104	S		BSW	7J		900	300	CN
17	265/65R17		112	S		BSW	8J		1120	300	CN
18	225/40R18		92	H	XL	BSW	8J		630	340	CN
18	235/40R18		95	V	XL	BSW	8 1/2J		690	340	CN
18	245/40R18		97	H	XL	BSW	8 1/2J		730	340	CN
18	235/45R18		98	H	XL	BSW	8J		750	340	CN
18	245/45R18		100	H	XL	BSW	8J		800	340	CN
18	215/55R18		99	H	XL	BSW	7J		775	340	CN
18	235/55R18		104	H	XL	BSW	7 1/2J		900	340	CN
18	255/55R18		109	H	XL	BSW	8J		1030	340	CN
19	255/35R19		96	H	XL	BSW	9J		710	340	CN
19	275/35R19		100	H	XL	BSW	9 1/2J		800	340	CN
19	225/40R19		93	V	XL	BSW	8J		650	340	CN
19	245/40R19		98	H	XL	BSW	8 1/2J		750	340	CN
19	255/40R19		100	V	XL	BSW	9J		800	340	CN
19	255/50R19		107	H	XL	BSW	8J		975	340	CN
19	245/55R19		103	V		BSW	7 1/2J		875	300	CN
19	245/55R19		103	H		BSW	7 1/2J		875	300	CN
20	275/40R20		106	V	XL	BSW	9 1/2J		950	340	CN
20	275/45R20		110	V	XL	BSW	9J		1060	340	CN
21	295/35R21		107	V	XL	BSW	10 1/2J		975	340	CN



# WU02 WINTER UHP STUDLESS

This studless ultra high-performance winter tire is designed with an asymmetric tread pattern which offers greater grip, handling, and braking capabilities for a more focused performance enhancement on ice and snow.



### INNER TREAD ELEMENTS

Staggered narrow grooves improve traction for safer driving on ice and snow.

### OUTER TREAD ELEMENTS

Wide shoulder blocks deliver more effective traction for enhanced braking performance when driving on ice and snow.



### INTERLOCKED SIPES

Tread blocks are separated by a dense group of jagged sipes which bite into ice and snow for improved traction. These sipes are also interlocked to enhance block stiffness for greater driving performance in wet and dry conditions.

### INNER SHOULDER GROOVES

Jagged shoulder grooves effectively grip to ice and snow for enhanced traction.

### OUTER SHOULDER DESIGN

The special outside shoulder design improves grip in deep snow for overall safer driving.



RIM	SIZE	PR	LI	SS	XL OR NOT	SIDEWALL	STANDARD RIM	UTQG	MAX LOAD (kg)	PRESSURE (kpa)	PLANT
18	225/50R18		99	V	XL	BSW	7J		775	340	CN
18	235/50R18		97	H		BSW	7 1/2J		730	300	CN
18	225/55R18		98	H		BSW	7 J		750	300	CN
18	225/60R18		100	T		BSW	6 1/2J		800	300	CN
18	245/60R18		105	H		BSW	7J		925	300	CN
18	265/60R18		110	T		BSW	8J		1060	300	CN
19	235/40R19		96	T	XL	BSW	8 1/2J		710	340	CN
19	275/40R19		105	V	XL	BSW	9 1/2J		925	340	CN
19	225/45R19		96	V	XL	BSW	7 1/2J		710	340	CN
19	245/45R19		102	V	XL	BSW	8J		850	340	CN
19	255/45R19		104	V	XL	BSW	8 1/2J		900	340	CN
19	235/50R19		103	H	XL	BSW	7 1/2J		875	340	CN
19	255/50R19		107	H	XL	BSW	8J		975	340	CN
19	225/55R19		99	H		BSW	7J		775	300	CN
19	235/55R19		101	H		BSW	7 1/2J		825	300	CN
19	245/55R19		103	H		BSW	7 1/2J		875	300	CN
19	255/55R19		111	H	XL	BSW	8J		1090	340	CN
20	275/40R20		106	V	XL	BSW	9 1/2J		950	340	CN
20	255/45R20		105	T	XL	BSW	8 1/2J		925	340	CN
20	275/45R20		110	T	XL	BSW	9J		1060	340	CN
20	245/50R20		102	H		BSW	7 1/2J		850	300	CN
20	255/50R20		109	H	XL	BSW	8J		1030	340	CN
20	275/50R20		113	V	XL	BSW	8 1/2J		1150	340	CN
20	235/55R20		105	V	XL	BSW	7 1/2J		925	340	CN
20	255/55R20		110	V	XL	BSW	8J		1060	340	CN
21	275/45R21		110	V	XL	BSW	9J		1060	340	CN



# ARCTIC WINTER HP STUDLESS

This studless winter tire is equipped with a dedicated winter compound and tread design that help improve handling and grip, thus offering piece of mind when driving on ice and snow.



### IMPROVED GRIP

Fine tread sipes effectively improve the tire's flexibility and ground contact area. This improves grip and handling performance thus offering better driving safety in wet and winter conditions.



### WINTER SAFETY

The upper portion of the sidewall sports a fang-like design that bites into snow. This design overall helps to enhance grip in snow, reduce the occurrence of side-skidding, and improve overall driving safety.



### WINTER PERFORMANCE

Specially designed winter rubber compound helps maintain tire softness and flexibility for exceptional grip on ice and snow, while also reducing rolling resistance for a longer tire life.

### ASYMMETRIC PATTERN

Inner tread elements are equipped with long horizontal tread grooves that improve traction performance while outer tread elements boast large tread blocks that help maintain steady handling and grip while turning.



RIM	SIZE	PR	LI	SS	XL OR NOT	SIDEWALL	STANDARD RIM	UTQG	MAX LOAD (kg)	PRESSURE (kpa)	PLANT
13	175/70R13		82	T		BSW	5.00B		475	300	CN
14	185/60R14		82	T		BSW	5 1/2J		475	300	CN
14	195/60R14		86	T		BSW	6J		530	300	CN
14	175/65R14		82	T		BSW	5J		475	300	CN
14	185/65R14		86	T		BSW	5 1/2J		530	300	CN
14	175/70R14		84	T		BSW	5J		500	300	CN
14	185/70R14		88	T		BSW	5 1/2J		560	300	CN
15	195/55R15		85	H		BSW	6J		515	300	CN
15	185/60R15		84	T		BSW	5 1/2J		500	300	CN
15	195/60R15		88	H		BSW	6J		560	300	CN
15	185/65R15		88	T		BSW	5 1/2J		560	300	CN
15	195/65R15		91	T		BSW	6J		615	300	CN
15	205/65R15		94	H		BSW	6J		670	300	CN
15	205/70R15		96	T		BSW	6J		710	300	CN
16	195/50R16		88	H	XL	BSW	6J		560	340	CN
16	195/55R16		87	H		BSW	6J		545	300	CN
16	205/55R16		91	H		BSW	6 1/2J		615	300	CN
16	215/55R16		93	H		BSW	7J		650	300	CN
16	195/60R16		89	H		BSW	6J		580	300	CN
16	205/60R16		92	H		BSW	6J		630	300	CN
16	215/60R16		95	H		BSW	6 1/2J		690	300	CN
16	215/65R16		98	T		BSW	6 1/2J		750	300	CN
16	215/70R16		100	S		BSW	6 1/2J		800	300	CN
16	225/70R16		103	S		BSW	6 1/2J		875	300	CN
17	215/45R17		87	H		BSW	7J		545	300	CN
17	225/45R17		91	H		BSW	7 1/2J		615	300	CN
17	235/45R17		94	H		BSW	8J		670	300	CN
17	205/50R17		89	H		BSW	6 1/2J		580	300	CN
17	215/50R17		91	H		BSW	7J		615	300	CN
17	225/50R17		98	H	XL	BSW	7J		750	340	CN
17	215/55R17		94	H		BSW	7J		670	300	CN
17	225/55R17		97	H		BSW	7J		730	300	CN
17	225/55RF17		101	H	XL	BSW	7J		825	340	CN
17	215/60R17		96	H		BSW	6 1/2J		710	300	CN
17	225/60R17		99	H		BSW	6 1/2J		775	300	CN
17	225/65R17		102	S		BSW	6 1/2J		850	300	CN
17	235/65R17		104	S		BSW	7J		900	300	CN
18	245/45R18		100	H	XL	BSW	8J		800	340	CN
18	245/45RF18		100	H	XL	BSW	8J		800	340	CN
18	215/55R18		99	H	XL	BSW	7J		775	340	CN
18	235/55R18		104	H	XL	BSW	7 1/2J		900	340	CN
18	235/60R18		103	H		BSW	7J		875	300	CN



# WH01 WINTER HP STUDLESS

Designed to offer excellent performance in winter weather conditions.



### FUEL EFFICIENCY

The special tread compound reduces rolling resistance for better fuel efficiency.

### WINTER PERFORMANCE

A reinforced center rib improves handling and high speed performance while multiple sipes enhance grip and braking capabilities on snow and ice.

### WINTER SAFETY

Zig-zag grooves improve the tire's self-cleaning capabilities for a safer drive on snow and ice.



RIM	SIZE	PR	LI	SS	XL OR NOT	SIDEWALL	STANDARD RIM	UTQG	MAX LOAD (kg)	PRESSURE (kpa)	PLANT
13	155/65R13		73	T		BSW	4.50B		365	300	CN
13	155/70R13		75	T		BSW	4.50B		387	300	CN
13	165/70R13		79	T		BSW	5.00B		437	300	CN
13	165/70R13		83	T	XL	BSW	5.00B		487	340	CN
13	175/70R13		82	T		BSW	5.00B		475	300	CN
14	185/60R14		82	T		BSW	5 1/2J		475	300	CN
14	185/60R14		82	H		BSW	5 1/2J		475	300	CN
14	165/65R14		79	T		BSW	5J		437	300	CN
14	175/65R14		82	H		BSW	5J		475	300	CN
14	175/65R14		86	T	XL	BSW	5J		530	340	CN
14	185/65R14		86	T		BSW	5 1/2J		530	300	CN
14	185/65R14		86	H		BSW	5 1/2J		530	300	CN
14	165/70R14		81	T		BSW	5J		462	300	CN

RIM	SIZE	PR	LI	SS	XL OR NOT	SIDEWALL	STANDARD RIM	UTQG	MAX LOAD (kg)	PRESSURE (kpa)	PLANT
14	165/70R14		85	T	XL	BSW	5J		515	340	CN
14	175/70R14		84	T		BSW	5J		500	300	CN
14	175/70R14		88	T	XL	BSW	5J		560	340	CN
14	185/70R14		88	H		BSW	5 1/2J		560	300	CN
14	185/70R14		92	T	XL	BSW	5 1/2J		630	340	CN
14	195/70R14		91	H		BSW	6J		615	300	CN
14	195/70R14		95	T	XL	BSW	6J		690	340	CN
14	205/70R14		98	T	XL	BSW	6J		750	340	CN
14	205/70R14		98	H	XL	BSW	6J		750	340	CN
15	195/50R15		86	H	XL	BSW	6J		530	340	CN
15	195/50R15		86	V	XL	BSW	6J		530	340	CN
15	185/55R15		86	H	XL	BSW	6J		530	340	CN
15	195/55R15		85	H		BSW	6J		515	300	CN
15	185/60R15		84	H		BSW	5 1/2J		500	300	CN
15	185/60R15		88	H	XL	BSW	5 1/2J		560	340	CN
15	185/60R15		88	T	XL	BSW	5 1/2J		560	340	CN
15	195/60R15		88	T		BSW	6J		560	300	CN
15	195/60R15		88	H		BSW	6J		560	300	CN
15	205/60R15		91	H		BSW	6J		615	300	CN
15	175/65R15		84	H		BSW	5J		500	300	CN
15	175/65R15		88	H	XL	BSW	5J		560	340	CN
15	185/65R15		88	T		BSW	5 1/2J		560	300	CN
15	185/65R15		88	H		BSW	5 1/2J		560	300	CN
15	185/65R15		92	T	XL	BSW	5 1/2J		630	340	CN
15	185/65R15		92	H	XL	BSW	5 1/2J		630	340	CN
15	195/65R15		91	T		BSW	6J		615	300	CN
15	195/65R15		91	H		BSW	6J		615	300	CN
15	195/65R15		95	T	XL	BSW	6J		690	340	CN
15	205/65R15		94	H		BSW	6J		670	300	CN
15	215/65R15		96	H		BSW	6 1/2J		710	300	CN
16	195/45R16		84	H	XL	BSW	6 1/2J		500	340	CN
16	205/45R16		87	H	XL	BSW	7J		545	340	CN
16	205/45R16		87	V	XL	BSW	7J		545	340	CN
16	205/50R16		87	H		BSW	6 1/2J		545	300	CN
16	195/55R16		87	H		BSW	6J		545	300	CN
16	195/55R16		87	V		BSW	6J		545	300	CN
16	205/55R16		91	H		BSW	6 1/2J		615	300	CN
16	205/55R16		94	H	XL	BSW	6 1/2J		670	340	CN
16	205/55R16		94	V	XL	BSW	6 1/2J		670	340	CN
16	215/55R16		97	H	XL	BSW	7J		730	340	CN
16	215/55R16		97	V	XL	BSW	7J		730	340	CN
16	225/55R16		99	H	XL	BSW	7J		775	340	CN
16	205/60R16		96	H	XL	BSW	6J		710	340	CN
16	215/60R16		99	H	XL	BSW	6 1/2J		775	340	CN
16	225/60R16		98	H		BSW	6 1/2J		750	300	CN
16	205/65R16		95	H		BSW	6J		690	300	CN
16	215/65R16		98	H		BSW	6 1/2J		750	300	CN
16	245/70R16		107	T		BSW	7J		975	300	CN

# WH03 WINTER HP STUDLESS

The WH03 is designed to greatly improve traction, handling, and driving stability for greater overall safety when driving in winter.



### WINTER GRIP

Large tread blocks and small sipes work together to increase overall grip for more efficient traction and braking on ice.



### WINTER SAFETY

The 90 degree angle shoulder improves anti-skid performance for overall increased safety on ice and snow.

### DRIVING STABILITY

The j-like shoulder design improves grip and driving stability.



RIM	SIZE	PR	LI	SS	XL OR NOT	SIDEWALL	STANDARD RIM	UTQG	MAX LOAD (kg)	PRESSURE (kpa)	PLANT
13	155/65R13		73	T		BSW	4.50B		365	300	CN
13	155/70R13		75	T		BSW	4.50B		387	300	CN
13	165/70R13		83	T	XL	BSW	5.00B		487	340	CN
13	175/70R13		82	T		BSW	5.00B		475	300	CN
14	185/60R14		82	T		BSW	5 1/2J		475	300	CN
14	195/60R14		86	T		BSW	6J		530	300	CN
14	175/65R14		82	H		BSW	5J		475	300	CN
14	185/65R14		86	T		BSW	5 1/2J		530	300	CN
14	195/65R14		89	T		BSW	6J		580	300	CN
14	165/70R14		85	T	XL	BSW	5J		515	340	CN
14	175/70R14		88	T	XL	BSW	5J		560	340	CN
14	185/70R14		88	H		BSW	5 1/2J		560	300	CN
14	195/70R14		91	H		BSW	6J		615	300	CN
14	205/70R14		98	H	XL	BSW	6J		750	340	CN
15	185/55R15		86	H	XL	BSW	6J		530	340	CN
15	195/55R15		85	H		BSW	6J		515	300	CN
15	185/60R15		88	H	XL	BSW	5 1/2J		560	340	CN
15	195/60R15		88	T		BSW	6J		560	300	CN
15	185/65R15		88	T		BSW	5 1/2J		560	300	CN
15	195/65R15		91	T		BSW	6J		615	300	CN
15	205/65R15		94	H		BSW	6J		670	300	CN
15	215/65R15		96	H		BSW	6 1/2J		710	300	CN
15	205/70R15		96	T		BSW	6J		710	300	CN
15	215/70R15		98	T		BSW	6 1/2J		750	300	CN
15	215/75R15		100	S		BSW	6J		800	300	CN
15	235/75R15		109	S	XL	BSW	6 1/2J		1030	340	CN
16	205/55R16		91	H		BSW	6 1/2J		615	300	CN
16	205/60R16		96	H	XL	BSW	6J		710	340	CN
16	215/60R16		99	H	XL	BSW	6 1/2J		775	340	CN
16	215/65R16		98	H		BSW	6 1/2J		750	300	CN
17	235/45R17		94	H		BSW	8J		670	300	CN
17	215/55R17		94	H		BSW	7J		670	300	CN
18	235/60R18		107	T	XL	BSW	7J		975	340	CN



# WCO1 WINTER LTC STUDLESS

A winter tire product specifically designed for commercial light trucks.



### WINTER HANDLING

The wide and jagged groove design efficiently drains snow and water out of the tire to improve handling in winter weather.

### WINTER PERFORMANCE

The intersecting blocks, grooves, and sipes allow for more effective braking on ice and snow.

### WINTER BRAKING

The precision cut sipes enhance grip on ice and snow to allow for a safer driving experience.

### DRIVING COMFORT

The tread width and block patterns ensure a secure contact with the road surface to improve driving comfort.



RIM	SIZE	PR	LI	SS	XL OR NOT	SIDEWALL	STANDARD RIM	UTQG	MAX LOAD (kg)	PRESSURE (kpa)	PLANT
12	155R12C	8PR	88/86	R		BSW	4.50B		560/530	450	CN
13	155R13C	6PR	85/83	R		BSW	4.50B		515/487	350	CN
14	185R14C	8PR	102/100	R		BSW	5 1/2J		850/800	450	CN
14	195R14C	8PR	106/104	R		BSW	5 1/2J		950/900	450	CN
15	195/70R15C	8PR	104/102	S		BSW	6J		900/850	450	CN
15	205/70R15C	8PR	106/104	S		BSW	6J		950/900	450	CN
15	215/70R15C	10PR	113/111	S		BSW	6 1/2J		1150/1090	525	CN
15	225/70R15C	8PR	112/110	S		BSW	6 1/2J		1120/1060	450	CN
15	195R15C	8PR	106/104	R		BSW	5 1/2J		950/900	450	CN
16	195/60R16C	6PR	99/97	T		BSW	6J		775/730	375	CN
16	215/60R16C	8PR	108/106	T		BSW	6 1/2J		1000/950	475	CN
16	195/65R16C	8PR	104/102	T		BSW	6J		900/850	475	CN
16	205/65R16C	8PR	107/105	T		BSW	6J		975/925	475	CN
16	215/65R16C	8PR	109/107	T		BSW	6 1/2J		1030/975	475	CN
16	225/65R16C	8PR	112/110	T		BSW	6 1/2J		1120/1060	475	CN
16	235/65R16C	8PR	115/113	R		BSW	7J		1215/1150	475	CN
16	285/65R16C	10PR	128	N		BSW	8 1/2J		1800	525	CN
16	185/75R16C	8PR	104/102	R		BSW	5J		900/850	475	CN
16	195/75R16C	8PR	107/105	R		BSW	5 1/2J		975/925	475	CN
16	205/75R16C	10PR	113/111	R		BSW	5 1/2J		1150/1090	525	CN
16	215/75R16C	10PR	116/114	R		BSW	6J		1250/1180	525	CN
16	225/75R16C	10PR	118/116	R		BSW	6J		1320/1250	525	CN



# FX11 WINTER HP STUDDABLE

The all new FX11 is a studdable winter tire that offers exceptional handling and traction to keep you safe in the most severe winter conditions.



### WINTER SAFETY

3D multi-wave sipes greatly reduce braking distance while improving handling performance on ice and snow. Lateral tread grooves efficiently channel water and slush for enhanced winter performance.



### WINTER PERFORMANCE

The tire utilizes a proprietary winter compound developed to maintain softness in extreme cold temperatures, thus offering excellent wet grip and braking performance.



RIM	SIZE	PR	LI	SS	XL OR NOT	SIDEWALL	STANDARD RIM	UTQG	MAX LOAD (kg)	PRESSURE (kpa)	PLANT
14	175/65R14		82	T		BSW	5J		475	300	CN
14	185/65R14		86	T		BSW	5 1/2J		530	300	CN
14	175/70R14		84	T		BSW	5J		500	300	CN
14	185/70R14		88	T		BSW	5 1/2J		560	300	CN
15	185/55R15		82	T		BSW	6J		475	300	CN
15	185/60R15		84	T		BSW	5 1/2J		500	300	CN
15	195/60R15		88	T		BSW	6J		560	300	CN
15	175/65R15		84	T		BSW	5J		500	300	CN
15	185/65R15		88	T		BSW	5 1/2J		560	300	CN
15	195/65R15		91	T		BSW	6J		615	300	CN
15	205/65R15		94	T		BSW	6J		670	300	CN
15	215/70R15		98	T		BSW	6 1/2J		750	300	CN
16	205/55R16		91	T		BSW	6 1/2J		615	300	CN
16	215/55R16		97	H	XL	BSW	7J		730	340	CN
16	205/60R16		92	T		BSW	6J		630	300	CN
16	215/60R16		95	T		BSW	6 1/2J		690	300	CN
16	225/60R16		98	T		BSW	6 1/2J		750	300	CN
16	205/65R16		95	T		BSW	6J		690	300	CN
16	215/65R16		98	T		BSW	6 1/2J		750	300	CN
16	225/65R16		100	T		BSW	6 1/2J		800	300	CN
16	235/65R16		103	T		BSW	7J		875	300	CN
16	235/70R16		106	S		BSW	7J		950	300	CN
17	215/45R17		91	T	XL	BSW	7J		615	340	CN
17	225/45R17		94	H	XL	BSW	7 1/2J		670	340	CN
17	215/50R17		95	T	XL	BSW	7J		690	340	CN
17	225/50R17		98	H	XL	BSW	7J		750	340	CN
17	215/55R17		94	T		BSW	7J		670	300	CN
17	225/55R17		97	T		BSW	7J		730	300	CN
17	235/55R17		99	H		BSW	7 1/2J		775	300	CN
17	215/60R17		96	T		BSW	6 1/2J		710	300	CN
17	225/60R17		99	T		BSW	6 1/2J		775	300	CN
17	235/60R17		102	T		BSW	7J		850	300	CN
17	215/65R17		99	T		BSW	6 1/2J		775	300	CN
17	225/65R17		102	S		BSW	6 1/2J		850	300	CN
18	225/40R18		92	H	XL	BSW	8J		630	340	CN
18	225/45R18		95	T	XL	BSW	7 1/2J		690	340	CN
18	235/50R18		101	T	XL	BSW	7 1/2J		825	340	CN
18	225/55R18		98	T		BSW	7J		750	300	CN
18	235/55R18		100	T		BSW	7 1/2J		800	300	CN
18	225/60R18		100	T		BSW	6 1/2J		800	300	CN
19	235/55R19		101	H		BSW	7 1/2J		825	300	CN

1inch=25.4mm | kPa=0.142psi | 1KG=2.2 lbs | XL Extra Load | LI Load Index | SS Speed Symbol  
BSW Black Sidewall



# WH12 WINTER HP STUDDABLE

The WH12 is a studdable winter tire designed for drivers that demand maximum traction in severe winter weather conditions, letting you outperform the elements to get more out of the winter season.



### V-SHAPED TREAD DESIGN

Improved grip on ice and snow, skid resistance, and effectively reduces noise emissions.



### SIPE DESIGN

Optimized sipe design ensures great grip on ice and snow.

### IMPROVED STUDDED TECHNOLOGY

12 rows of studs are designed to maximize grip and traction performance for safer driving in winter weather.



### SPECIAL BUFFER LAYER

Special rubber buffer layer at the bottom of the stud absorbs the impact force of snow to prevent studs from falling out.



### INNOVATIVE SQUARE DESIGN

Increases the ground contact area of the tire to effectively improve grip performance and increase skid resistance.



RIM	SIZE	PR	LI	SS	XL OR NOT	SIDEWALL	STANDARD RIM	UTQG	MAX LOAD (kg)	PRESSURE (kpa)	PLANT
13	155/70R13		75	T		BSW	4.50B		387	300	CN
13	165/70R13		79	T		BSW	5.00B		437	300	CN
13	175/70R13		82	T		BSW	5.00B		475	300	CN
13	155/80R13		79	T		BSW	4.50B		437	300	CN
14	185/60R14		82	T		BSW	5 1/2J		475	300	CN
14	155/65R14		75	T		BSW	4 1/2J		387	300	CN
14	165/65R14		79	T		BSW	5J		437	300	CN
14	175/65R14		82	T		BSW	5J		475	300	CN
14	185/65R14		86	T		BSW	5 1/2J		530	300	CN
14	175/70R14		84	T		BSW	5J		500	300	CN
14	185/70R14		88	T		BSW	5 1/2J		560	300	CN
15	185/55R15		82	T		BSW	6J		475	300	CN
15	185/60R15		84	T		BSW	5 1/2J		500	300	CN
15	195/60R15		88	T		BSW	6J		560	300	CN
15	175/65R15		84	T		BSW	5J		500	300	CN
15	185/65R15		88	T		BSW	5 1/2J		560	300	CN
15	195/65R15		91	T		BSW	6J		615	300	CN
15	205/65R15		94	T		BSW	6J		670	300	CN
15	215/65R15		96	T		BSW	6 1/2J		710	300	CN
15	205/70R15		96	T		BSW	6J		710	300	CN
15	215/70R15		98	T		BSW	6 1/2J		750	300	CN
15	235/75R15		105	S		BSW	6 1/2J		925	300	CN
16	205/50R16		87	T		BSW	6 1/2J		545	300	CN
16	205/55R16		91	T		BSW	6 1/2J		615	300	CN
16	215/55R16		97	H	XL	BSW	7J		730	340	CN
16	205/60R16		92	T		BSW	6J		630	300	CN
16	215/60R16		95	T		BSW	6 1/2J		690	300	CN
16	225/60R16		98	T		BSW	6 1/2J		750	300	CN
16	205/65R16		95	T		BSW	6J		690	300	CN
16	215/65R16		98	T		BSW	6 1/2J		750	300	CN
16	225/65R16		100	T		BSW	6 1/2J		800	300	CN
16	215/70R16		100	T		BSW	6 1/2J		800	300	CN
16	225/70R16		103	H		BSW	6 1/2J		875	300	CN
16	235/70R16		106	T		BSW	7J		950	300	CN
16	245/70R16		107	T		BSW	7J		975	300	CN
16	245/75R16		111	S		BSW	7J		1090	300	CN
17	215/45R17		91	T	XL	BSW	7J		615	340	CN
17	225/45R17		94	H	XL	BSW	7 1/2J		670	340	CN
17	235/45R17		97	T	XL	BSW	8J		730	340	CN
17	215/50R17		95	T	XL	BSW	7J		690	340	CN
17	225/50R17		98	H	XL	BSW	7J		750	340	CN
17	215/55R17		94	T		BSW	7J		670	300	CN
17	225/55R17		97	T		BSW	7J		730	300	CN
17	235/55R17		99	V		BSW	7 1/2J		775	300	CN
17	215/60R17		96	H		BSW	6 1/2J		710	300	CN
17	225/60R17		99	H		BSW	6 1/2J		775	300	CN
17	235/60R17		102	H		BSW	7J		850	300	CN
17	215/65R17		99	T		BSW	6 1/2J		775	300	CN
17	225/65R17		102	S		BSW	6 1/2J		850	300	CN
17	235/65R17		104	T		BSW	7J		900	300	CN
17	245/65R17		107	T		BSW	7J		975	300	CN
17	265/65R17		112	T		BSW	8J		1120	300	CN
17	265/70R17		115	S		BSW	8J		1215	300	CN
18	225/40R18		92	H	XL	BSW	8J		630	340	CN
18	225/45R18		95	T	XL	BSW	7 1/2J		690	340	CN
18	245/45R18		100	H	XL	BSW	8J		800	340	CN
18	235/50R18		101	T	XL	BSW	7 1/2J		825	340	CN
18	215/55R18		95	T		BSW	7J		690	300	CN
18	225/55R18		98	T		BSW	7J		750	300	CN
18	235/55R18		100	H		BSW	7 1/2J		800	300	CN
18	255/55R18		105	V		BSW	8J		925	300	CN
18	225/60R18		100	T		BSW	6 1/2J		800	300	CN
18	235/60R18		103	H		BSW	7J		875	300	CN
19	255/50R19		107	H	XL	BSW	8J		975	340	CN
19	235/55R19		101	H		BSW	7 1/2J		825	300	CN
20	275/40R20		106	H	XL	BSW	9 1/2J		950	340	CN



# WCS01 WINTER LTC STUDDABLE

The WCS01 is a studdable winter tire designed for drivers that demand maximum traction in severe winter weather conditions, letting you outperform the elements to get more out of the winter season.



### V-SHAPED TREAD DESIGN

Improved grip on ice and snow, skid resistance, and effectively reduces noise emissions.

### SIPE DESIGN

Optimized depth and length of sipes maintain tread rigidity and greatly enhance grip and handling.



### IMPROVED STUDDED TECHNOLOGY

12 rows of studs are designed to maximize grip and traction performance for safer driving in winter weather.



### SPECIAL BUFFER LAYER

Special rubber buffer layer at the bottom of the stud absorbs the impact force of snow to prevent studs from falling out.



### INNOVATIVE SQUARE DESIGN

Increases the ground contact area of the tire to effectively improve grip performance and increase skid resistance.



RIM	SIZE	PR	LI	SS	XL OR NOT	SIDEWALL	STANDARD RINM	UTQG	MAX LOAD (kg)	PRESSURE (kpa)	PLANT
14	175/65R14C	6PR	90/88	Q		BSW	5J		600/560	375	CN
14	185R14C	8PR	102/100	Q		BSW	5 1/2J		850/800	450	CN
15	195/70R15C	8PR	104/102	Q		BSW	6J		900/850	450	CN
15	205/70R15C	8PR	106/104	R		BSW	6J		950/900	450	CN
15	215/70R15C	8PR	109/107	R		BSW	6 1/2J		1030/975	450	CN
15	225/70R15C	8PR	112/110	Q		BSW	6 1/2J		1120/1060	450	CN
16	195/60R16C	6PR	99/97	S		BSW	6J		775/730	375	CN
16	195/65R16C	8PR	104/102	R		BSW	6J		900/850	475	CN
16	205/65R16C	8PR	107/105	Q		BSW	6J		975/925	475	CN
16	215/65R16C	8PR	109/107	R		BSW	6 1/2J		1030/975	475	CN
16	225/65R16C	8PR	112/110	R		BSW	6 1/2J		1120/1060	475	CN
16	235/65R16C	8PR	115/113	R		BSW	7J		1215/1150	475	CN
16	195/75R16C	8PR	107/105	Q		BSW	5 1/2J		975/925	475	CN
16	205/75R16C	8PR	110/108	R		BSW	5 1/2J		1060/1000	475	CN
16	215/75R16C	8PR	113/111	R		BSW	6J		1150/1090	475	CN